

Book 13 S

Police

B 364

District 32

S  
13  
~  
Police  
~  
District  
32  
~



PARTICULARS FOR ORDERING A  
REPETITION OF THIS BOOK.

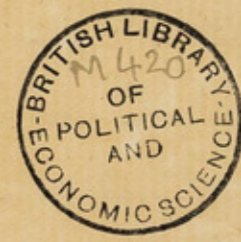
No. 16079

ROBINSON, PICKERING & HUNT,  
9 & 10, ST. DUNSTON'S HILL, E.C.

[i]

COLL II

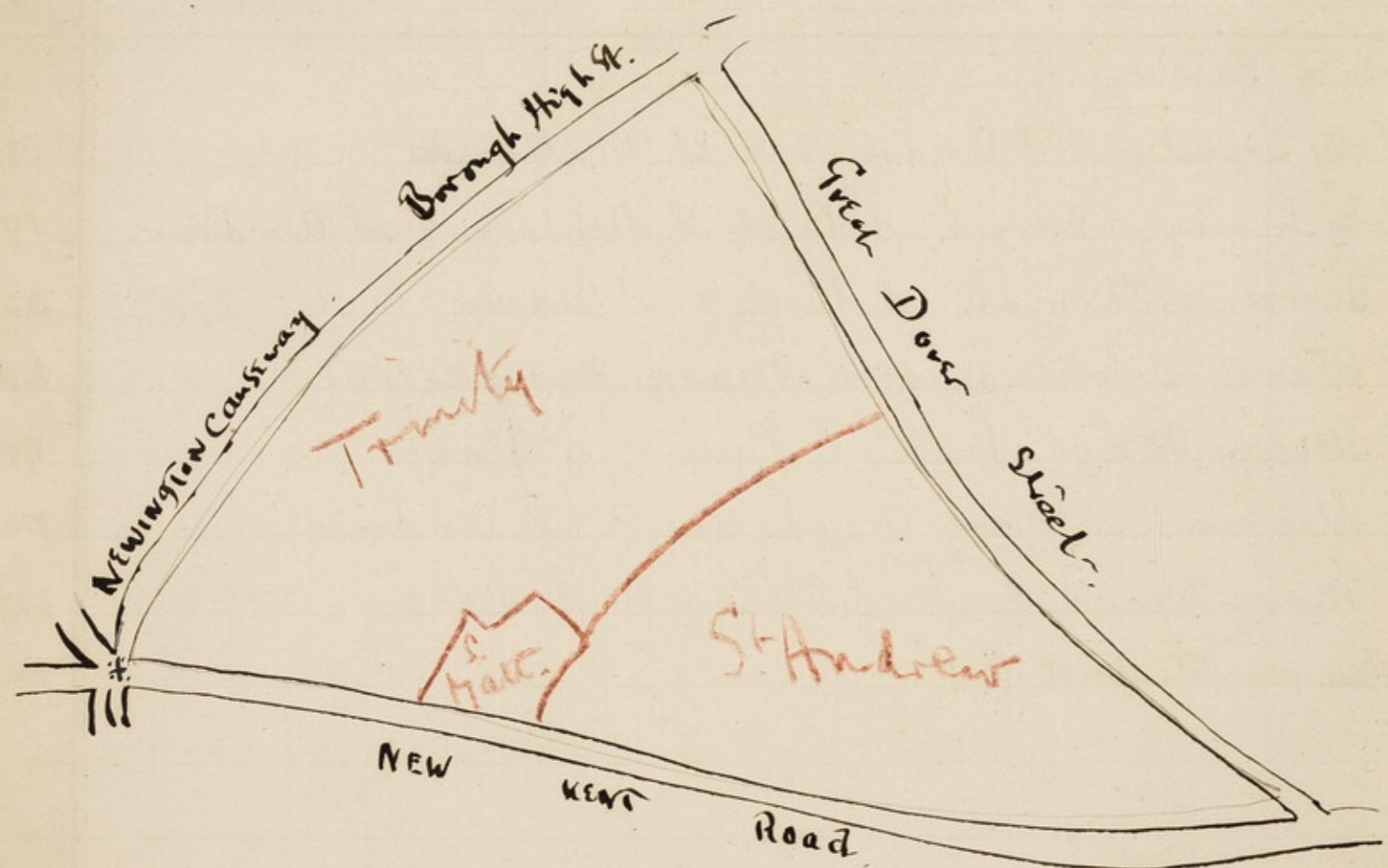
B 364





Police Official	Division	District	Parts	Page
Sommersgill	P. Const.	32	Parts of Parishes of:- Holy Trinity <sup>6</sup> S. Andrews <sup>7</sup> & S. Matthew's <sup>8</sup>	1
— " —	— " —	32	Holy Trinity <sup>6</sup> , S. Georges <sup>3</sup> , S. Paul <sup>5</sup> , S. Stephen <sup>7</sup> , & S. Andrew <sup>7</sup> , <small>dist 31 not in list</small>	19
— " —	— " —	32	S. George <sup>1</sup> , S. Thomas <sup>2</sup> , S. Paul <sup>3</sup> & S. Olaves <sup>1</sup> .	35
Watts	P. Const. Bermondsey Sub. Division	32	S. Olave <sup>1</sup> , S. John <sup>2</sup> and S. Mary <sup>4</sup> Magdalene.	65
— " —	— " —	32	S. Mary <sup>4</sup> Magdalene, S. Paul <sup>3</sup> & S. Olaves <sup>1</sup> .	91
— " —	— " —	32	S. Stephen <sup>5</sup> , S. Mary <sup>4</sup> Magdalene, & S. Andrew <sup>7</sup> .	115
— " —	— " —	32	S. Mary <sup>4</sup> Magdalene, S. Mary <sup>10</sup> & S. Luke <sup>11</sup> .	127
		32	Notes on District (32)	141





\* Starting point.

DISTRICT 32.

Notes of a walk with P.C. Sommersgill, in the area bounded on the N.W. by Newington Causeway and the Borough High St., on the N.E. by Great Dover St., and on the S. by the New Kent Road, the whole forming parts of the parishes of *Holy Trinity, St. Andrew's, & St. Matthew.*

(E.A.) May 24.25.99.

Sommersgill is a constable of some ten years' standing, and is expecting promotion to the rank of sergeant in about six months. He is intelligent, and knew the district well. He did not talk easily or much, but, I think, sincerely. He appeared to be a man of excellent character and the respectability of his get-up was over-powering. He had a clerical face.

Starting at the Elephant and ~~xxxxxxx~~ Castle, and E. along the New Kent Road we turned N. up Poplar Row (now part of Tarn St.) On W. side nothing but Tarn's premises as far as Tarn's Yard; colour out here. Then  $2\frac{1}{2}$  st. houses, with forecourts; pink, as map. On the E. side, only 3 shops; pink as map. The rest a bus-yard. Tarn's Yard, (Reckingham Court of the map) is non-residential, and is almost entirely taken up by Tarn's premises. Reckingham St.: (W. of Wellington St.) on S. side, red out for warehouses etc. purple, as map. On N. side, shops and a poor block of dwellings. purple as map, as also the rest of the street running E. and W. On the N. side is the



(2)

Holy Trinity Mission.

Tiverton St: 2 st. houses, flush with pavement; "rather rough"; S. side better than the N. many gossiping women and ill-clad children. Improved, but still d.b. Omit black barring at N.W. corner.

Goode's Court: S.E. side; ~~2~~ <sup>7:25</sup> ~~2~~ cottages; d.b. as map. Behind is <sup>on E side only.</sup>

Wellington St: (new a continuation of Tarn St.) 2 st. houses; forecourts; a few shops; respectable. Rents 11/- to 13/-; generally six rooms to a house; the occupiers mostly old tenants, but "a good deal of packing" was the information of an old resident. L. b. to purple. S. is

Dorset St: 2 st. houses; flush with pavement; untidy. D. b. as map. Running N. is

Linwood Place: narrow; paved; cul-de-sac; 2 st. houses; rough; ragged children; 3 or 4 rooms to a house; rents 2 6/- to 7/6. D.B. as map.

Uxbridge St: 2 st. houses; flush with pavement; better than Dorset St. flowers, blinds, ornaments etc. N. of Uxbridge Place and Dorset St. d.b. to l.b.; the rest d.b. as map. On the S.E. side is

Poston Place: 2 st. houses; doors shut; no broken windows; d.b. to l.b. and

Uxbridge Place: 2 st. houses; 2 and 4 rooms to each; terrible women, mostly pregnant. D.B. as map. To the S. is

Wellington Street - purple L

Uxbridge St N of Uxbridge Place +  
Dorset Street - lb



Arch Street - Buildings - lb

Paul's Passage N side pk  
3 → db

Bideford Court db both sides

Devonshire Street - purple

(3)

Arch St: mainly coal, corn, bus yard etc. Small block of dwellings on South side, near East corner, 3 storeyed; bus men of the lower grades mainly; uncoloured to l.b.

(3 rooms at 9/6)  
Meadow Row: 3 st. houses; gloomy, but low-grade pink sti as map. Running North is the rest of

Rockingham St: 2 st. houses; forecourts; police and other decent folk living here; respectable; purple to pink.

Paul's Passage: (to the South) mainly dye-works etc. but two cottages, one on each side, on the South d.b.; on the N. pink. Colour thus, not purple.

Along Union Road into

Bath Terrace: 3 st. houses; others 3 st. and basements; and, the conspicuous feature on the N. side, the Bath Chambers; 5 st. and basements; well-built; a good many City police living here. The whole street pink, as map.

Devonshire St: (now Avenmouth St.) lies to the S. 2 and 3 st. houses. L.b. as map. At the S.W. corner is

Bideford Court: not shown on map; narrow; 2 st. houses; 3 rooms, letting at 6/-; crowds of babies. D.b.

Devonshire St: (Newington Causeway end) loses its dark-blue, the houses having given place to stables etc. Nearly opposite is a new small block; 4 storeyed; decent; pink uncoloured to pink. By the Causeway into

Union Road: mainly 2 st. houses; a few shops; pink, as map



*S. George's Road - pk*

*Pitney Place - purple*

(4)

The recreation ground crowded with children as we passed.

S. George's Road: (now part of Falmouth Road) 2 st. houses; forecourts; opposite the Welsh Church to corner, Falmouth Chambers. A good street, but pink-barred to pink. Out to New Kent Road: for about half way to Harper St. the big Z forecourts, that ought to be gardens still uncovered, but after this point they have met their doom, and are all built over. The street pink-barred as map. N. up Harper St: 3 st. houses; shops etc. pink, as map. W. along County Terrace St: 2 and 3 st. houses; l.b. as map. At the West end running North, are four houses not shown on map. They are 2 storeyed, and l.b. like the rest of the street in which they are included.

Brunswick Court: 2 st. cottages; remains d.b. as map. By Woodman's Place: asphalt; 2 st. houses; l.b. as map. Went into one occupied by a baker's labourer; 3 rooms, little yard behind. The woman had recently come from Peckham; said the Court was very quiet, but Peckham was "pleasant-er like". Her rent was 6/-.

Turning left we came to Union Place: un-named on map; 2 st. houses, fronted with a rather desolate gravel yard; the terrace dated 1827; 3 police said to be living here. Purple, as map. N.E. is Avliffe St: 2 st. houses; flush with side-walk. Purple, as map. At N. E. corner are two courts,

Pitney Place: 2 st. houses; quiet; rents 7/- 3 rooms and



*Harmers Buildings - purple* L

*Arnott Street - purple* L?

(5)

a wash-house. Was told there were no lodgers here; there was "no room"; a pensioned policeman living here. D.b. to purple. The other court is

Harmers' Buildings: 2 st. houses; S.W. side only, like Pitney Place, : gardens~~mm~~, some cared for, and the court a pleasant enough spot. A pensioned policeman here too. D. b. to pink. East is

Ripley St: 2 st. houses; flush; quiet; l.b. to purple. The d.b. goes out, the site having been apparently absorbed by the School.

Theobald's St: 2 st. houses; flush; very much like Ripley St. Purple, as map.

Arnott St: like Ripley St; l.b. to purple.

Adam St: 2 st. houses; a cul de sac; bus-yard etc. l.b. as map.

Devereux St: (to the N.E.) 2 st. houses; forecourts; ~~are~~ good; all pink as map. To the W. is

Standard St: 2 st. houses; purple, as map. Of the Ripley and Theobalds type.

On May 25, starting from the N. end of Union St, N. along the Borough to

King's Place: a cul de sac; 2 st. houses; quiet. Colour l.b. as map, but on both sides. S.W. into

Trinity St: 3 st. houses and basements. Pink-barred, as



Merrick Square - pk b<sup>2</sup>

Falmouth Road SW of Circular Rd - pk

Upper Bland Street - lb

map. This, with Merrick and Trinity Squares "the aristocratic parts of the Borough". Near the S.W. corner is Trinity Place: 2 st. houses; very rough; a small court; d. b. as map. S.W. down

Swan St: 2 st. and 3 st. houses; pink, as map.

Breckham St: 3 st. and 2 st. houses; very much like Swan St. Pink, as map.

Trinity Square: 3 st. houses, with basements; forecourts; some private, but mostly lodgings; many Guy's students here and hereabouts. Pink-barred, as map.

Merrick Square: 2 st. houses with basements; something like Trinity Square, but rather better. Apartments the rule however. Red to pink-barred.

Falmouth Road : 2 and 3 st. houses; rather more stylish than the lower end (the S. George's Road of the map); pink-barred, as map to Circular Road, then pink-barred to pink.

Ralph St. and Union Square: 2 st. houses; quiet; working-class. Pink, as map. To the S. is

Circular Road: 2 st. houses; working-class; very much the same all through. Pink and violet (to pink) as map

Ralph St. (S. of Falmouth Road), David St., and Canterbury Road (now Upper Bland St.) all 2 st. houses and pink, as map.

Upper Bland St (as shown on map): 2 st. houses; some



queer old cottages on S.E. side. All from d.b. and l.b. to purple. By

Great Dover St: p.barred, as map, with an omission for Dewrance's large engineering works, to

Lawson St: 2 st. houses, "very much like Great Bland St.", and the big block of Britannia Chambers (6 storeyed, stucco, ugly; a police-constable among the occupants; a bus-yard behind, giving an unprepossessing appearance to an unprepossessing block, but it, with the street, from l.b. to purple.

Great Bland St: N. of Lower Bland St. 2 st. houses, fore-courts. ~~xxxxxxxxxxxxxxxxxxxxxxxx~~ -- many of them gardens. Pink, as map here. S. of Lower Bland St. a 4 st. block, poor, on the E. side. <sup>pink</sup> l.b. ~~as map~~. On the other side stables etc.; colour omitted. S. of Lawson St. is

Iris Place: divided only by a fence from

Margaret Place: running out of Lower Bland St. Both 2 st. cottages; l.b. as map. In Marggret Place, and probably in the other, three rooms to a cottage; rents from 7/- to 7/6.

Lower Bland St: 2 st. houses; l.b. as map. D.b. court at N.E. end gone; new cottages ~~xxxxxxxx~~ at street frontage here. Two or three houses opposite show signs of the demolition of the d.b. court, some of the occupants having moved into them, and made, certainly one d.b. house. Omit

(1)

Lawson Street - purple  
Britannia Chambers - lb

Lawson St  
H. V

Gt. Bland St S of Lower Bland St E side - lb



Buckenham St & Square - pur

Swan Place - db & lb

Lander Place - db

Name N. end  
N. end

Only N. end. Ren.  
1/2

(8)

15

some colour on this S.E. side for new warehouse. S.E. is  
Warner St: 2 st. houses; forecourts; pink, as map.

Buckenham St. and Square: 2 st. houses; all flush with  
sidewalks; poor class; some broken windows and neglected  
children. Pink, to purple. The Square dated 1828.

North up Trinity St. to

Cole Place: now a continuation of Globe St.) purple, as map  
Cole St: (running North) 3 st. houses; flush; some re-bu-  
ing "1895"; used to be "very rough"; and "rough still but  
better". Omit colour at N.E. corner for new bakery; the  
rest from d.b. to l.b.

Swan St: 3 st. houses, etc. Edinburgh Buildings, 4 storey  
ed. All pink, as map, with an omission of colour for the  
bakery mentioned in Cole St. To the N. running into  
the High St. is

Swan Place: (now Avon Place): some rebuilding; asphalted;  
2 st. houses, flush; much improved; black to l.b. By  
Trinity St. into the High St, On the S. is

Lander Place: 3 st. houses; W. side only; most doors open;  
untidy; poor casual class; l.b. to d.b.

Mulme Place: (Union on map) 2 st. houses; W. side only; p-  
aved; 2 offices at N. end, and four or five houses; rent  
(4 or 5 rooms) 12/-. L.b. to pink. Next is Swan Place (  
(see above). Swan Yard belongs to Tillings.



This area includes the best part of the Borough, and the tendency is for things to improve. There is no important local employment, excepting Tarn's and the other shops of the main streets. It would probably <sup>be</sup> found on closer ~~xxxxxxx~~ analysis that many of the men in regular employment, like the City police living in Bath Place, go to the City for their work. The worst corner is that of which Wellington St. is the centre, and, with many costers and casual labourers, Semmersgill appeared to think that many of the men living in these adjacent courts picked up much of their casual livelihood in the crowded neighbourhood of the Elephant and Castle, on the assumption that the immense congestion of trams and 'busses and people there made work of one kind or another -- light-fingered or otherwise. The adjacent busyard also doubtless absorbs a certain amount of low-class labour, with a penchant for drunkenness and disorder. But the area, taken as a whole is respectable and decent, and, as stated, improving.





\* Starting point.

Sylvester St  
N side black & lb  
S -- pur.

? Paul St. N. of Nebraska St. Napier Street - lb

Pearl Place - E side - lb

Globe St - lb & db

Globe St - lb  
Violet Place lb & db

Warren Place - lb

Black Horse Court N side lb

Notes of walks with P.C. Sommersgill in the area <sup>32</sup>  
 bounded on the S.W. by Great Dover St., on the N. by Long Lane, and on the S.E. by Weston St. the whole forming parts of the parishes of <sup>2</sup> Holy Trinity, St. George's, St. Paul, St. Stephen & St. Andrew. (E.A.) May 25 (part) 26

Starting from the N. end of Tabard St. on the right:  
Sylvester St: Mainly block dwellings; on the N. side, in addition, a Common Lodging House. Better S. side than N. here l.b. to purple. N. side l.b. for buildings, and black for C.L.H. This was described as being occupied by the regular run; "not all thieves", but plenty of them. A policeman mobbed there about 6 months ago.

Napier St: (now Nebraska St.) 2 and 3 st. houses; uncoloured to purple. On the S. side is

Babel Place: (now Pearl Place): 2 st. houses; l.b. as map.

Further South is

Globe St: 3 st. houses, and 2 st. with attics; re-fronted on N. side; improved; here from d.b. to l.b. Omit bar on both sides, but leave S. side d.b. On N. side is

Violet Place: partly re-built -- Globe Buildings, 3 st houses; the rest 2 st. houses, as before. d.b. to l.b.

Warren Place: on the S. side, 2 st. houses; costers, carmen etc, as everywhere round here. From d.b. to l.b. All these courts very much like Pearl Place.

Black Horse Court: public-house on S. side; 2 houses and



a shop on the other. Here, uncoloured to l.b.

(The Black Horse has recently changed hands, the late landlord having been convicted of selling drink to a drunken person.)

Tabard St:remains very much as it was. The black-barred line consists mainly of houses owned by a ~~W~~ widow ~~XXXX~~ living somewhere in the n'hood; they are let out in rooms for single nights and short periods, and are much used by prostitutes and shady people generally. The bar remains here and on the opposite side of the street it should be added for a shorter row of houses used very much in the same ways. There are some Common Lodging Houses in the street but nothing special is said against them. Vice, poverty and business jostle as usual in the street, which, with the addition of the barring mentioned, may remain purple and purple barred as in the map. A portion of colour on the W. side should be omitted for Dewrance's place.

Up Great Dover St. on the N.E. side is

George Court: A backway to "The George". Four 2 storyed cottages on N. side. l.b. as map. Only colour on S. side.

On May 26, starting from the top of Long Lane, on the South side is

S. George's Place: (now Cardell Place) 3 st. ~~xxxxxxx~~buildings; cul-de-sac; some broken windows etc. "pretty quiet" l.b. as map. Lower down is the entrance to a small net-work of courts and alleys:



Henry Place - lb

L Henry Place ✓ l.b.  
L Fisher's Buildings ✓ d.b.  
Providence Place ✓ d.b.  
E. side ✓ l.b.

Fisher Buildings - d.b

Wickham Gardens - lb

Wickham Court - lb

Southall Place; Sarah Place; Henry Place, where a half-drunken man wished to show me his rent book and prove that he was not in xxxxxxxx arrears; Sterry St.; a kind of main artery in this little world, <sup>of two-storied houses</sup> with Fisher's Buildings on the South, and Myers' Place, a tiny court of three houses, with a very respectable woman in one mangling linen that looked clean and tidy; and on the North, Providence Place, very small houses, white-washed, S. side only, ending in a cul-de-sac. All these courts etc. are coloured l.b. except Henry Place, which appears to be purple, and Providence Place, which is d.b. But there is little or nothing to choose in the whole block; there were very few people about, and an air of decent quiet prevailed. Purple, d.b. and l.b. to light blue throughout.

By Tabard St, and South, to  
Fox's Buildings: clean; l.b. as map. On S. side is  
Fox's Court: very miserable; 4 roomed cottages; rent 5/-;  
d.b. as map.

S. Stephen's Square: 2 st. houses; purple, as map.

S. Stephen's Place: something like Fox's Court; d.b. barred, as map. This court, and the Square a great gambling resort for boys on Sundays etc.

Wickham Gardens: 2 st. houses; cul-de-sac; some broken windows; doors shut. Purple to l.b. On the N. is

Wickham Court: a decent little spot, but not pink. Light-



Staple St<sup>e</sup> Delph St<sup>e</sup> side of central block - db

Stannage - db

Uppermill & Dobbs Cross - db

Walker Street SW side db

Delph St<sup>e</sup> - db

Board's Buildings: (the passage leading to Amicable Row)

d.b. as map.

Castle St: (now Camelot St.) l.b. as map. On the N. side is

Little Britain: small; narrow; houses on E. side only; d.

b. as map.

Amicable Row: d.b. as map.

Staple St: l.b. as map. On the S. side are openings with

strange names leading into Delph St. the centre of the

fish-curing trade just here. The first opening is

Stannage: l.b. as map. but the second and third

Uppermill and Dobbs' Cross are both poorer and more for-

lorn. Most of the dwellings appear to consist of two rooms

only, and in Uppermill the rent of one was 4/6. Both d.b.

The pink of the map goes out.

Walker St: (to the N.E.) is better; l.b. to purple.

Delph St. is the centre of interest here, however, and its

fish-curing establishments give character to the little

colony round. Many of the houses look miserable to a de-

gree, but there is probably a good deal of money going.

In one of the establishments that we penetrated a buxom

woman showed us round, and we found fish galore, and five

or six men working. While in the street a smart pony drev

up, and Semmersgill had previously mentioned the good cat-

tle that these curers possess. It was significant too that

the driver of the cart had an evening paper with him, and



that a small throng at once gathered round him eager for news as to the latest race or for the latest odds. L. b. is still probably the best colour for the ~~xxxx~~ street. At the N.W. corner is a Ragged School. Close by, and a considerable centre of employment, is Pink's Factory. A passage under one of their buildings, leads out of Staple St. into Minto St: most of this is now taken up by Pink's extensions; the rest is purple, as map.

Chapel Place (leading out of Long Lane) a centre of the Wesleyan Mission, the leader of which, Mr. Hopkins, Somersgill spoke of as having done a deal of good in the district. The houses in the Place at the S.E. corner are poorer than the rest, but the whole may still remain pink as map.

Long Lane: some shops etc. is hardly a pink-barred street. A flourishing local tradesman (Fogden) has a house in wh. servants are kept, but this is exceptional to the street. Pink-barred to pink.

Weston St: the boundary stret on this side of the Borough Sub-Division of the police, is pink and purple as map to Wilderness St. but from this point the East, like the West side, becomes purple. Two new small blocks have been built between Wilderness and Rethsayx Streets on the East side add purple for them. To the N.W. is

Long Lane - pk.

Weston St E side S of Long Lane  
- lb

+ lb.



Paul's cottages - lb

Herbert's Place - lb & db

Henry St. N. side db b<sup>2</sup>

Little Hunter St: some re-building, but l.b. as map. N. is  
Paul's Cottages: E. side only; little two-roomed houses;  
one, occupied by an old woman, a paper-sorter, (and her cat)  
a decent soul, was rented at 3/9. The cottages are not col-  
oured separately on the map, and should be l.b. They lead  
nowhere and a large yard and the seclusion of the spot  
mark it out as a place for Sunday gambling. By Tabard  
St. into

Falstaff Yard: 2 st. houses; many broken windows; untidy  
children; costers etc. But money said not to be scarce;  
l.b. as map.

Clarendon St: (now Law St.) a mixed class of people living  
in it, including some fish-curers, as in Delph St, many  
very poor. 2 st. houses. Leave l.b. as map.

Herbert's Place (now part of Lansdowne Place) has a few  
miserable houses at the S. corner; purple to d.b. here;  
a corresponding block North, purple to l.b. like Law St.

Lansdowne Place: 2 st. houses, as in all this block, d.b.  
as map. Said to be quieter than a few years' ago.

Clarendon Place is now part of Westcott St, and both ~~xxxix~~  
are d.b. as map.

Wilfrid St: bisecting Law St. takes no separate colouring.

Henry St (now Pardoner St.) 2 st. houses; colour out on  
S. side for School. Said to be rougher than Lansdowne Pl.  
but not so bad as Etham St. thieves etc. l.b. to d.b. bar-



(7)

red. A beer-house here that has lost its license for opening at illegal hours. Entering at the N.E. end

Etham St: 2 st. houses; narrow; cobbled; an evil look about most of the people one saw, but quiet and few signs of extreme poverty. Noticeable that the N.E. end, which is said to have the worst character, looked the best off. The street "one of the darkest in the Borough"; thieves, prostitutes, ticket-of-leave men etc. Black, as map.

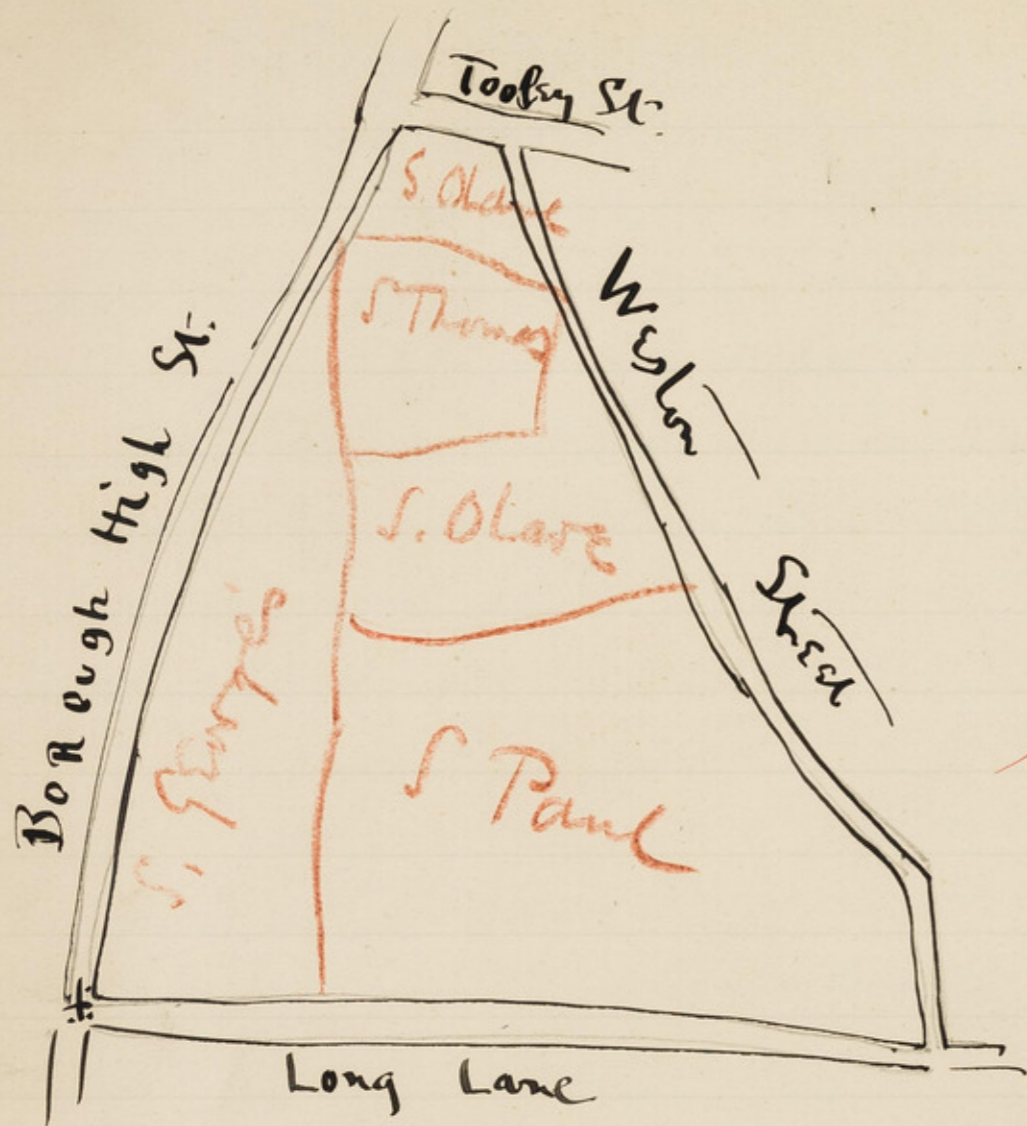
Red Cow Alley, the dark blue patch near the Tabard St. end is now closed. Omit colour.



Just as the area of the last walks took in the best parts of the Borough, so does this take in some of the worst, the streets lying between Tabard St. and Long Lane making up an area that runs hard for notorious degradation, vice and poverty, the darkest streets lying to the W. of the High St. The industrial features are the brush-making in and around Tabard St; fish-curing; and Pink's big factories, the proximity ~~of~~ and growth of which in the immediate n'hood of much cheap labour is a feature that has been previously noted in the cases of Nicholls and Coombes near Hackney Wick and Machenechie's in the Isle of Dogs. The goods yards off the Borough High St and the Borough Market account for much of the adult unskilled labour, while costers and hawkers abound.

Structurally there is little change ~~in~~ in the district, the rebuilding and enlargement of Dewrance's engineering shops, and the extension of Pink's big places being the chief changes. There has been little or no change so far as dwellings are concerned, and much of the district will doubtless form part of an "improvement" scheme before many years have gone by. On the whole the colours of the map stand, and any improvement that can be shown appears to be that which is generally at work, making, on the whole for less violence, intemperance, and brutality. But much of all three remain.





Colliers Rents  
l.b. & pur. b.

⚡ Starting point.

How about S. Thomas? it is not listed

Combined with S. Clare Church now uses as Chapterhouse.

P.C.

Notes of walks with Sommersell in the area bounded  
by the Borough High St. on the West, ~~XXXXXXXXXX~~  
~~XXXXXXXXXX~~ by Weston St. on the N.E. from Tooley St. to  
Long Lane, and by Long Lane on the S. (E.A.) May 29.30.  
Forming part of the parishes of S. George, S. Thomas, S. Paul, & S. Clare's.  
Starting from the S. George's Church, along the High  
St. North to

Angel Place: New buildings on S. side, and some houses closed on N. Purple out; part of purple barred remains as map. The E. continuation is

Colliers' Rents: very much like Angel Place. 3 st. houses a queer mixture of people, thieves etc. Both said to be somewhat improved. Black to purple-barred. Lower down the houses are demolished on the right (purple out); on the left is a Mission Hall, and new 3 st. buildings with attics. Poor; a queer lot of occupants; S. speaks of seeing women going home in the small hours of the morning etc. Uncoloured to l.b. barred. Into Long Lane

Willmotts' Buildings: d.b. as map; costers etc. etc. very poor but not shady like Colliers' Rents. Skirting the Churchyard is

Banger Court; very much like Willmotts' Bdgs. d.b. as map but colour should be slightly extended on the N.

Through the Churchyard, which was at the moment and is said to be well-used by the poor of the n'hood as a recreation ground, to the High St. again. On the S. is



Layton's Buildings: 3 st. houses; creepers; respectable; as map, but colouring in a somewhat different position. The opening leads into a large yard not patrolled by the police. Large gates are at the beginning of the private property, and Somersgill said that these were often "marked" by the police. In this case, the gates being wide, the "marking" would be by pinning black cotton from side to side, in such a position that if the gates are scaled the cotton gets displaced, and a search can be instituted. Marking was, he said, a common practice, as with houses that are empty and in special charge of the police. Bent and interlocked pins, so fixed in, that the opening of a door or window would remove them and ~~xixx~~ thus show that fastenings had been tampered with and that some one was at his night work, are often used, and S. mentioned a dodge of his own, by which a small piece of bent whale-bone was wedged in such a position that tampering or opening would release it, and suspicion thus be roused. All these "marks" when used are said to be removed at dawn. They seem sufficiently primitive, and I do not suppose that these devices are very secret. But, ~~xxxx~~ as S. said, "We of course don't tell ~~xxxxxxxx~~ everybody".

Layton's Grove (a little further N.): 2 st. houses; 3 and 4 rooms (the rent of one of the latter houses was 8/-) a 3 st. house at the end of the Grove is uncoloured on

Layton's Grove - db ? L



map, and this should be l.b. with the rest of the Grove (not purple). Along High St. past the Half Moon Yard, with the entrances to the public house of that name on either side, and the quaint bridge connecting the building overhead -- a bit of Old London, to Chapel Place: 2 st. houses and 2 st. with attics; at end Trinity Buildings (4 st.) A good many broken windows, but poverty not the prevailing impression. In two houses on S. side about 12 women are said to be living; they are prostitutes, but the houses are not used as brothels. Some thieves in the Buildings. d.b. to l.b. barred. Through a passage archway to Mermaid Court: 3 st. and 4 st. houses. One of the ~~latter~~ <sup>former</sup> is letting at 13/- a week. ~~It~~ had a small yard; a very respectable woman tenant; <sup>part</sup> sublet to one other family. The Court p. and purple as map. Extra pink on S. side, and light blue for the Trinity Buildings, already mentioned one entrance to which is in Mermaid Court. No barring here; better than the part in Chapel Place. <sup>N.E.</sup> and un-named on map, is Tennis Court: colour on E. side only; 3 st. houses; pink to <sup>✓</sup>purple. In The Ride there is nothing but the back entrance to the Horse and Groom. Bowling Green Lane: schools; warehouses; etc. houses main-

*Chapel Place - purple*

*✓ barred*

L

*Tennis Court - purple*

L

L



Newscomen St - pk

L

Surrey Place - lb

L

Plantain Court - lb

L

L

Dove Place - lb

L

Crosby Row - lb

L

Side  
lb

Saxon Court - db & pk

L

ly 3 st. respectable. P. as map, with extra at N.W. corner for good 2 st. house. South is

Price's Buildings: 2 st. cottages; with, not forecourts, but real gardens. A small oasis. Pink, as map.

Newscomen St: mainly 3 st. houses; some shops; servants unlikely. Pink-barred to pink. Down Crosby Row, in which on the W. are

Surrey Place: 3 2 st. houses; N. side only; 2 with 3 rooms; 1 with 5 rooms; a decent woman occupying one of the smaller houses was paying 6/-. The Court clean. D.b. to l.b.

Bader Place: rebuilt; warehouses; colour out.

Plantain Court: unnamed on map; 2 st. houses; very much same class as Surrey Place. purple to l.b. Some colour out for new warehouse.

Dove Place: again much the same; clean; flower boxes in window, etc. d.b. to l.b.

Crosby Row itself 2 and 3 st. houses; purple as map, with colour omitted on site of the Charterhouse Mission Church. W. along Long Lane to

Laxon Court: 3 st. buildings on the right: l.b. 1 pink house on the left (2 st.) and one built up. Further W. is

George Place (now Balin Place): 2 st. houses; forecourts; dozens of children, few ragged; l.b. as map.

E. of Crosby Row is

Laxon St: leading to the Board School. 2 st. houses; pink,



Trinity Place - lb

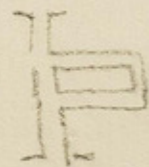
Porlock Place - lb

Careth Place - db

Cusack Place - db

as map. Returning N. up Crosby Row, on the right are Trinity Place: purple, <sup>✓</sup>as map, with omission of colour for space occupied by the Charterhouse Mission. This is a ~~+~~ queerly shaped building, with church and club-rooms etc., combined. Sommersgill at first assured me it was a Roman Catholic Church, but there seemed doubt about it, and in Trinity Place I asked again. Two women made a shot, one saying "Puseyan", and the other some ~~xxxx~~ further corruption of Carthusian. In another cottage were two other women, one of whom proved to be a strong Protestant from Cornwall, "the same county as he comes from" meaning the missionary in charge "he ought to know better than to run about to other churches besides his own; he goes as far as he dare and further than he ought; I have no patience with him". The other woman was a Catholic, and she listened, saying little to the indignation of her friend. It did not appear that on the whole the Mission was making very great headway in Trinity Place.

Porlock Place: with an outlet South to Kipling St. 2 st. houses; purple to l.b.



Careth Place: not shown on map (late Union Place); narrow cul de sac; 4 room cottages; one letting at 7/6. d.b. or Cusack Place: (late Cottage Place); not properly shown on



map. 2 st. cottages; d.b. or l.b.



Snobs' Fields: from the W. end to Kipling St. S. side, p. barred to pink. shops etc. On the N. side from Great Maze Pond to Weston St. some shops; poor, little old houses, many of them with very poor occupants. Pink to purple.

Kipling St.: (late Nelson St.) pink, for the Buildings, and purple, as map. The Buildings are an old block of the Met. Association (1855); good class of tenants; always let, so said the caretaker, a very quiet and capable Scotsman, "I can pick and choose". Three rooms are let for from 5/9 to 7/6; 4 rooms from 6/3 to 8/6. When he came arrears were £30; this was ~~12~~ 14 years ago; now arrears are a few shillings only. Many pay in advance; then the practice was unknown.

Out of Kipling St. are

Edmund Place: (S. of Guy St.) 2 st. houses; cul-de-sac; clean; pink to purple.

Rudyard Place: (late Alfred Place) 2 st. houses; purple, as map. ~~ix~~ "We've got a fine name now, haven't we?" said a woman ~~ix~~ living here, "Rudyard" with all the emphasis on the second syllable. I thought at first that the authorities appeared to ~~ix~~ <sup>her to have</sup> been guilty of a foolish redundancy in calling the spot a place as well as a yard, but she aired her knowledge the next moment by saying "Rudyard Kipling, in a tone half of scorn and half of amuse-

Edmund Place - lb

L. b. L

Rudyard Place - lb

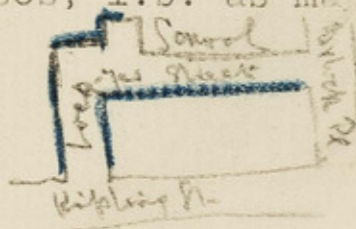
L. b. L



ment, mouthing, as it were, some strange thing.

On the W. side of Kipling St. is

Lockyer (late West) St: 2 st. houses; l.b. as map, with some colour out for the School.



(May 30)

E. of Nelson (Kipling) St. is

Richardson St: 2 st. houses; flush with side-walk; purple (good type) as map. (A gap in the houses on the W. side)

Guy St: 2 and 2½ st. houses; pink, as map. New recreation ground just opened at N.W. corner.

Weston St: mainly 2 st. houses; forecourts. N. of Market, E. side a clearance; also at other points colour to be omitted for new warehouses (leather). The S.W. angle is called Molesworth Square (1844), very respectable; all the street, save omissions, pink, as map, except two larger houses on W. side, midway between Guy St. and Snows' Fields. These have a poor tenement house look; pink to ~~map~~ l.b. S. of Molesworth Square, is

Weston Place: 2 st. houses; creepers; forecourts, no gardens; paved, and no way for vehicles; respectable. Pink as map to Short St. Below this point on the E. side are 4 x 3 st. houses; rather unkempt; some broken windows; dirty women; have a bad reputation with the police, for

*Weston St<sup>e</sup> Snowsfields to Long Lane - pk & lb*

*Weston Place - E side - lb*



Valentine Place - lb

✓  
l.b.

drinking etc. not crime. p. to l.b. or d.b. On the W. side a new 3 st. house (good) has been built (a builder's) and the pink might be extended somewhat to indicate this.

Round the corner, leading out of Long Lane is

Valentine Place: cul de sac; broad; asphalted; entered by paved archway; 3 st. houses; quiet; some poor looking windows and untidy women. Occupiers a very mixed class. Pink to purple.

N.W. to Great Maze Pond, on the left to

Halcombe Buildings: 2 st; belong to Guys; they are getting their own employees in to a great extent; others are riverside workers etc. Spoke to one woman who had been there for thirty years. Her rent is 5/9; others now pay 7/-, but hers will not be raised. Her husband is 76 and she is 72, and the former is still good for a days work. He is a sail hand at Hays Wharf. His dinner was cooking ready to be sent -- three-quarters of a pound of steak and a suet pudding, and he will eat it "every bit". "He has a good appetite, and a good digestion, thank God". Pink, as map.

After marking the licensed places in the stations (S.E.R. and L.B. and S.C.) down the steps to the end of Joiners St: a good deal of the street runs under the railway arches, and turns in the middle, making a dark angle. Prostitutes used to give a good deal of trouble here, soliciting etc. Mostly low class and working men, but others;



Maze Pond Terrace - red & pink<sup>3</sup> L

Maze Pond - purple L

Gt. Maze Court & Maze Court - lb L

Dean Street - pink<sup>4</sup> L

for students at Guys'. Much improved of late, and these complaints rather of the past. East of New St. is

Maze Pond Terrace: (Steel Yard on map): a public-house, and a row of good lodging houses. Students here mainly. Red to pink<sup>✓</sup>-barred.

Maze Pond: 3 st. plus atts. on N. side only; purple, as map. No red, which is not intended to indicate any houses in this street. S. is

Great Maze Court: cul de sac; paved; from d.b. and purple to l.b. on both sides. A narrow passage leads to

L. Maze Court: (not shown separately on map) d.b. to l.b. ✓

An archway leads out into Maze Pond and

Dean St: which should go, like Maze Pond Terrace from red to pink<sup>✓</sup>-barred (Customs Office etc.)

Sparnick Row (to the S. of Great Maze Court) 3 st. houses pink as map.

S. Thomas St. W. of Westen St. need have no colour E. of Guys, unless the public-house at the Dean St. corner be shown. The rest of the coloured part is offices etc. W. of of Guys are some good private houses, doctors etc. living there; red as map. On the uncoloured N. side, a little E. of the Church, is one private house, good, a parson's, Sommersgill thought. A spot of red might be added here.



Conditions have been again fairly stationary in the area covered by this walk, but stationary at a higher level than in the preceding. Neither Guy's Hospital nor the railway termini appear to have any great effect upon the class of people living in the neighbourhood, although the effect of the former is traced in the doctors living St. Thomas St., in the students who lodge in Steel Yard, and in the occupants of Holcombe Buildings. There has been a little building, less than might have been expected in a district that is so near to London Bridge and to the City. Working class dwellings are still, with few exceptions two and three storied houses; block dwellings are few and far between. This fact, combined with the inclusion of the termini, the Hospital, ~~and~~ the carmen and cow-tractors' yards, including many belonging to the railways, ~~and~~ together with a considerable number of business and non-residential premises, prevents the people from being very thick on the ground.

The general impression left by a survey of this half of the Borough, lying E. of the High St. is that it has been too much depreciated in the press and in public opinion, and that, in spite of the part lying between Tabard St. and Long Lane, it is not an area that presents problems of a social and administrative kind in any peculiar



degree. Excessive drinking and the increase of gambling and betting, rather than crime and professional vice appear to be the most prevalent weaknesses. Sommersgill has known the district well for some ten years, and when we finished the Tabard St. area, he was emphatic in expressing his opinion that the signs of improvement were undoubted. There was less wife-beating, less fighting, less violence, and less drunkenness, although in all these respects there was plenty of room for still further improvement, and at one point in the walk he hinted that "one ought to come on Saturday night to see the real character of the people". The police patrol everywhere alone, and have done so for some years.

Sommersgill hardly ever condemned the management of any particular public house, although he occasionally mentioned some offence that a previous landlord had committed. ~~xxxxxx~~ The roughness of some of the houses was traced rather to their connexion and surroundings than to their management. But he was clear that there are far too many of them, "too many by three-fourths" as he once said, and he mentioned that at one <sup>fixed</sup> point on their ground there are thirteen houses within a stone's throw.



A chance incident on May 30 threw light on the ac-  
tion of the police in enforcing the law that forbids the  
serving of a drunken person or allowing him to be on the  
premises. Just as we came up to the public house in Maze  
Pond Terrace (late Steel Yard) a man (a navvy) came out,  
reeling and spewing in abject beastliness up the pavement  
making his way to the pub. urinal. He was in here a minute  
or two, and I waited to see if he would return to the  
house. He did, and again I waited to see if he would be  
served. In a minute or so, I noticed another man offering  
him beer, and then we moved away. It appeared then that  
Somersgill had seen the man who offered beer, also order  
or some spirits  
whisky for himself, and I asked S. what he would have  
done in the case had he been on duty. The answer was not  
quite clear, but it was evident that the course most of-  
ten pursued is to point out the man who is drunk to the  
publican and prevent him from being served. When any step  
is taken, it appears that <sup>in the vast majority of cases</sup> the matter ~~begins~~ begins and ~~ends~~ ends  
in this way. If any charge is made against the pub-  
lican the precaution is always taken of having a witness,  
and every case is apparently defended in the courts by ~~2~~  
the Legal Protection Society of the Trade. The police are  
therefore uncommonly cautious before taking any serious  
step. The case that we had seen was, however, so clearly  
an offence, that Somersgill began to have quickenings o



or his official conscience, just as I had had of my public  
 one, and he asked me if I wished him to take further ac-  
 tion in the matter. This was rather a poser, as neither  
 had we time at the moment, nor did I want to be mixed up  
 in the affair and called as a witness. Eventually, howev-  
 er, we went back to the House, and I expected that Sommers-  
 gill would have gone straight in and made his complaint.  
 But not a bit of it. We must, he said, see the man drink,  
 but this at the moment he appeared to have no intention  
 of doing, and we again moved on without any step being **2**  
 taken. This time I had quite decided to give the matter  
 up, but as soon as we got away Sommersgill's anxiety re-  
 turned, and I realized how mortally afraid he was lest  
 his superiors should hear anything of what had happened  
 and of his neglect of what, although he was told off for  
 special work with me, he still clearly regarded as his **2**  
 duty. He even feared punishment, and less of his hoped  
 for promotion. Eventually, as the simplest thing to do,  
 I went in myself and spoke to the <sup>bar-</sup>man in charge, the pub-  
 lican being at the moment absent. He was quite alive to  
 the offence of which he was guilty, was a good deal per-  
 turbed, extremely grateful, and said that the man should  
 be put out at once, ~~xxxxxx~~ shouting for the chucker-out  
 from the recesses of the house at the word. A minute lat-  
 er, and the navvy, the man who had offered him the beer,  
 and a small boy of about twelve, apparently the son of t



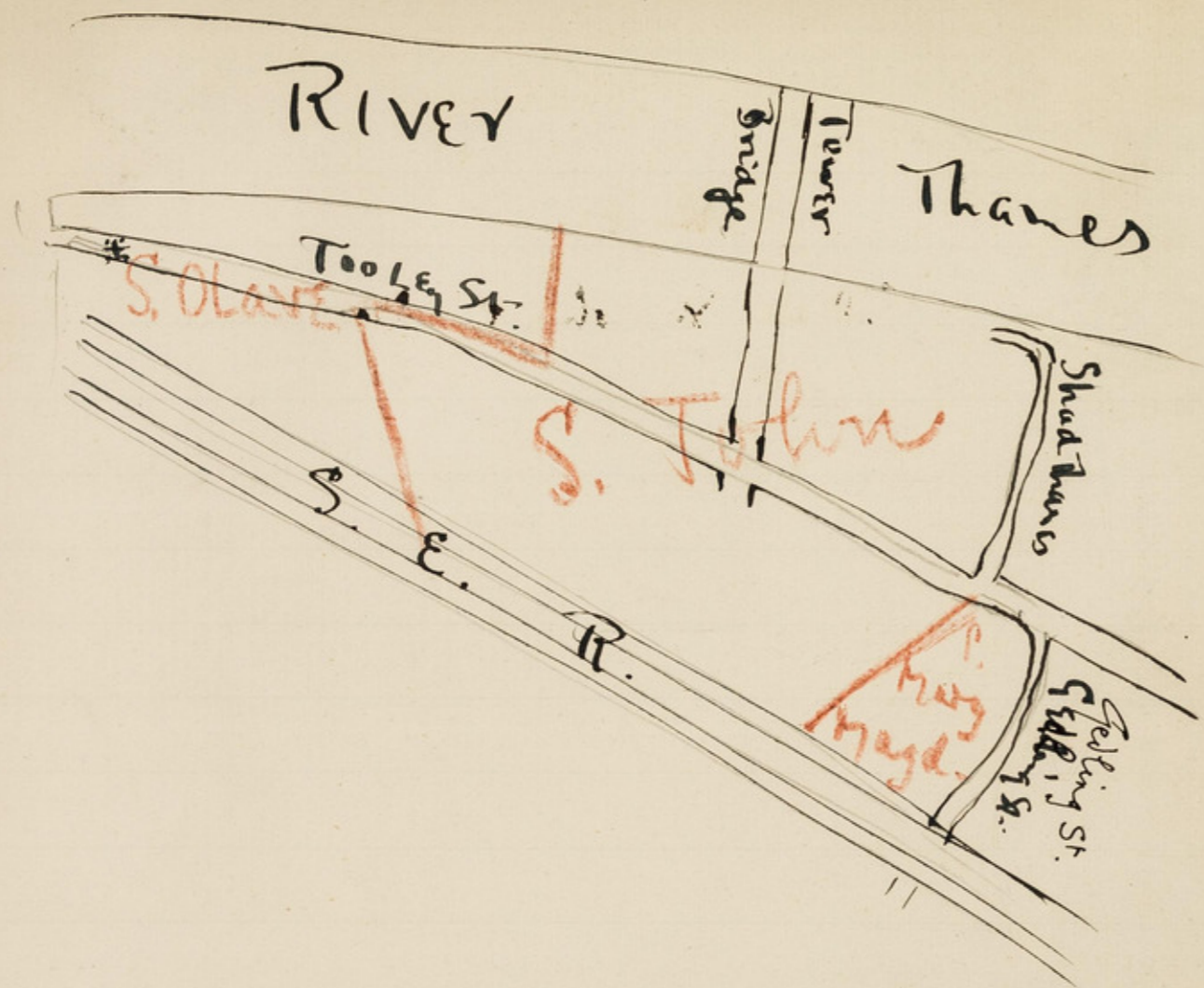
the latter, came out, (the two former quite drunk, although not helplessly so), and reeled out of sight, perhaps to another public house. The incident happened at the dinner hour, we having first seen the man at about 1.10. Our share in it took perhaps ten or fifteen minutes. The house when I entered it was quite full, and, so far as I could tell, save for the two sets, the trade being done was legitimate.

In talking the matter over with Sommersgill afterwards, I suggested that the incident ought to be reported and a black mark registered against the House, and again S. was on tenterhooks, for <sup>he</sup> appeared to fear that if he made any report and the matter was inquired into, he would be considered to have condoned an offence, and for that again punishment might be serious. Eventually, he said that he would make a report, but whether this was done or not I cannot say. He appeared to think that I might let someone in authority know of what had happened, and his fear of consequences <sup>was if he made his own report</sup> seemed to show that if any such incident as that which we had seen does get down in black and white the action taken by the officer who reports is very closely scrutinised. On the other hand, save under the most exceptional and flagrant circumstances, when inaction would be almost impossible or, perhaps the more likely case, <sup>when</sup> it is thought that witnesses would re-



port such inaction, it appears that the police would be very unlikely to take any ~~serious~~ step, other, <sup>perhaps,</sup> than that of pointing out the man who ought not to be served, should they be on the spot when a man obviously drunk entered a ~~the~~ licensed premises.





\* Starting point.

Notes of a walk with P.C. Watts, of the Bermondsey Sub-Division of the Met. Police, in the area bounded on the N. by the River, on the South, by the S.E.R. and on the East by Shad Thames, <sup>+ Felling St.</sup> the whole forming parts of the parishes of S. Olave, St. John, & S. Mary Magdalene.

(E.A.) June 5.6.99.

Watts is a thorough-going policeman, heavy in build, in manner and in tread. He has been in the district for about 10 years, and knows it intimately. Like Sommersgill he was not talkative, but he appeared straightforward. He is one of the many who go through their service without being promoted, and, although he perhaps would not have been successful had he done so, he professes not to have "troubled" himself in the matter. He appeared to have a grudge against the Force inasmuch as it is using the best years of his life, and, if he saw a chance of getting out of it he would. But he is not going "to throw his years of service away", and the pension they will ultimately bring him. I liked him, and, although perhaps less capable and certainly less ambitious than Somersgill, he was a sturdier fellow.

Starting from the W. end of Tooley St. we turned N. Battle Bridge Lane: (late Mill Lane): very few dwellings, and two of them are pubs, but vans, vans, vans, blocking everywhere. Hays' Wharf has recently obtained xxxixxxx



English Grounds - lb

Chambers in Tooley Street - db

(2)

67  
permission to close its gates at the ends of Counter St. and Hays' Lane at night. The Lane p. as map. To the E. is English Grounds (late Brewers' Alley and Bull Court): 2 and 3 st. houses; lightermen and other riverside workers; earnings probably range from 21/- to 50/- a week, Watts suggested, but added that most were "very poor". One woman, the best off in the place, rented ~~xxxxxxx~~ a five-roomed house (9/-); another had four rooms and took in two lodgers; and there was a poor 3 st. 3 roomed house that was 6/6 a week. Perhaps from d.b. to l.b.

Morgan's Lane: only one 3 st. house; occupiers very much "like those in English Ground"; l.b. as map. B. into and E.

Stoney Lane: now big warehouses; pink out at N. end; S. end, pink, as map.

Green Bank, and Ship Yard: the whole of the d.b. between Morgan's Lane and Stoney Lane cleared, closed or re-built with warehouses. Into Tooley St. again, passing Unicorn Passage, at the end of which there is a R.C. School, and The Chambers in Tooley St. E. of Unicorn Passage: 4d. a night and 2/- a week; said to give no trouble; pink-barre to l. or d.b.

Vine St: at the end of this is the old Thames Sub-way, now closed for passengers; on the W. some new buildings (two rooms and kitchen, 7/-; 3 rooms and kitchen, 9/6) Uncoloured to pink. On the E. side, S. end is



White's Court - db

Potter's Fields    pk<sup>h</sup> + pur  
pk<sup>h</sup>

(3)

White's Court: only three poor little houses; l.b. to d.b.  
Bethel Place: (to the N.) 2 st. cottages; old; very rough;  
many Irish; some ticket of leave men; women at sack-making,  
wood-chopping; drinking the great vice, rather than crime.

All d.b. as map.    N. into

Pickle Herring St: the houses (pink) shown, have given way  
to new offices; omit colour.    S. down

Potter's Fields: 2 good houses on the E. side; managers of  
wharves; ~~ex~~ servants kept; p. to [red]. On the W. side are  
3 houses; the R.O. living in one; waterside men in the oth-  
ers; l.b. to purple.

Vine St. Buildings: big and cheerless blocks; purple  
as map.    Into Tooley St. past the new buildings of S.  
Olave's Grammar School (the foundations of the old ones  
are said to have been disturbed by the sinkings for the  
Tower Bridge), to Freeman's Lane, now the Bridge.

The Tower Bridge has had, and is destined to have a  
considerable effect on this n'hood, but, so far, there has  
not been much building, except the new Tower Bridge Hotel.  
This stands on the E. side of the Southern approach to  
the Bridge; is a large place, and said to employ a staff  
of 40; and its license is said to have absorbed three  
others of the immediate vicinity. The triangular space to  
the W. of the Hotel is clear at the moment, and the pur-  
ple and p. barred go ~~xxx~~ out. The space on the N. side forms



Queen Elizabeth Street - red

L

Boss St. N of Gaisford St. E side - pk

L

~~xxxxxx~~

Tooley Street E of Boss St. - pk

L

Queen St. & Kings Row N of Gaisford St. pk W side

part of

Queen Elizabeth St.: which is also clear E. of Freeman's Lane on both sides as far as Boss St. save for the Hotel. Horleydown Lane (E. of the Bridge): is clear on both sides S. to Gaisford St. Purple <sup>of pink</sup> omitted. Nearly all the building belongs to Courage's Brewery, but the only occupied house (except the pub. on the E. side) is ~~xxxxxxxxxxxx~~ one tenanted by one of the brewers of the firm. Colour red.

N. by Shad Thames, into

Boss St.: N. of Gaisford St. only two houses occupied, <sup>both</sup> both by some of Courage's people; pink. All the colour of the (purple) map disappears. No colour S. of Goat St. but the rest, except for the clearance on the W. side between Goat St. and Q. Elizabeth St. (from purple to pink). Occupants mainly Brewery employees, draymen etc.

Tooley St.: from Boss St. to the E. end, is hardly pink-barred, and goes from this colour to pink; third-rate shops etc. The new <sup>Board of Guardians' Office</sup> ~~xxxx~~ etc. of S. Olaves is here.

Queen St. and King's Row new form Lafone St: in the S. part, to Queen Elizabeth St. there has been no rebuilding yet, but a clearance on the E. side, with which the d.b. Court has also disappeared. Apart from the omission of x colour the purple, as map. Poor 2 st. houses. N. of Q. Elizabeth St. to Gaisford St. new 3 st. dwellings on the W. side, built by Mr. Lafone. The improvement had removed the



d.b. Court to the W. and the whole street goes from purple to pink on both sides here. N. of Gaisford St. there are only 3 houses (the old King's Row) and these also are pink, not purple. Mr. Lafene's was a well-known name during the Great Dock Strike. On the E. side are

Clark's Cottages: only three; N. side; l.b. as map.

Gaisford St: at the W. end, on the S. side is a row of new houses occupied by some of the upper staff men of the Brewery; 3 st. houses; p. to red. The rest of the street has 2 and 3 st. houses; many of them old and well-built, "often for captains", with plenty of timber about, as is appropriate. The past distinction has gone, but there is a look of decent comfort about the street which is pink, rather than purple of the map. There is no colour E. of New St. To the N. is

Shad Thames: mostly wharves and warehouses; 4 or 5 old 3 st. houses; good class, though their better days have passed. Pink, as map, E. of Curlew St. The pink on W. side of this street is an error, and goes out. It is a strange corner of London here, with the River at hand, but blocked out by the high buildings, and even the sky partly hidden by the iron bridges that have been thrown across the roadway. S. down

Curlew St: old houses again, and those N. of Gaisford St.

bump

↳

↳

Curlew St - pk



Surrey Buildings - lb

(6)


75

well-occupied, by Wharfingers Managers etc. <sup>Purple</sup> pink to <sup>✓</sup> pk.  
The N. half of the W. side clear.

Barred here. S. of Gaisford St. purple to pink. The wood-  
work of the doorways a noticeable feature, and to one  
carved entrance Watts admirably drew my attention. E. is  
Surrey Buildings: 2 st. houses; round the corner E. houses  
only on the N. side. Colour omitted here; the rest l. ra-  
<sup>Thames side, to the N. has distinctive rather than opposite. D.B. as map</sup>  
ther than d.b. n E. along

Shad Thames, where the p. houses facing E. stand for a 'pub'  
and a coffee house, the latter a big rambling place. On N.  
side, opposite New Sq. is one 3-st. house; uncoloured to W.  
Out of Gaisford St. N. is

New Lane, with New Square at the N. end. On the W. is a  
little Court, 2 houses; tumble-down; others closed; l.b.  
as map, with the Lane at this point. At the Square, with  
Morrison's Court running back W. and S. it is very dark  
blue; women, loud-voiced, and foul-tongued ("A little bit  
of Bermondsey", said Watts, as they flung threatening oaths  
at some children that were playing near); dirt; squalid  
children, with the continuous and miserable wailing of one  
inside; one woman sitting outside her house, handsome,  
strong, and stupid with drink -- all the signs to make  
one suspect that this out of the world corner of London  
is also one of its most drunken and low-lived spots. While  
we were there a crowd of urchins who had been bathing in  
the Thames rushed up, naked, to dress; a little public,  
perhaps, but the best thing we saw.

 + Morrison's Court



Queen Elizabeth St. E of Curlew St. N. side pk.

(7)

77

S. down Shad Thames, and W. along Queen Elizabeth St.  
John's Court: (S. side) 3 st. houses; purple, as map.

Harold's Place: (S. side); down; omit d.b.

Queen Elizabeth St. itself, with 2 and 3 st. houses, remain; on the whole a purple street. Perhaps the few houses on the N. side, E. of Curlew St. should be pink, but the rest remains, as map, emitting on the N. side for a clearance. S. is

Three Oak Lane: 2 st. houses on E. side; Purple as map 2 here. On the W. side, the houses closed, and the d.b. Court down. Omit colour here.

On June 6 we took the district S. of Tootley St. starting at the W. end.

(S. side)  
Tootley St: pink-barred and pink, as map, omitting the pink-barred bit opposite Hay's Lane. New offices and warehouse here.

Bermendsey St: a good deal of new business property. Omit pink on W. side and at S.E. corner.

Magdalen St: all colour out on N. side -- nothing but warehouses, some new, stables, and the backs of Tootley St. 2 buildings. S. side, mainly 2 st. semi-detached houses; pink, as map. To the S. is

Gibbon's Rents: 2 st. houses; gloomy enough, but all coming down; all closed except 4 on the N. and 2 on the S.



side. No thoroughfare for vehicles; paved. In as far as coloured, d.b. as map.

Griffith's Rents has only one house left; the causes of these local clearances are (1) the extension of Spratts' (2) the widening of Henry St. and Biscuit Works, and (3) the widening of the S.E.R. The latter will be found to be a source of alterations at many points along this N. side of the railway, the side on which the widening is being made, and along which Henry St. runs. The latter is being extended E. but is at the same time being converted into a kind of cryptic way, its arches supporting, not a Church, but a railroad.

W. along Tooley St. to

Shand St.:(late College St.): 3 and 2 st. houses, flush with pavement; narrow; purple, as map. Into Henry St.

again, and E. under its arches to

Barnham St.: on the W. Barnham St. Buildings, let in sets of 1, 2, and 3 rooms, at rents from 2/6 to 3/-. Occupied by labourers, carmen etc. Privately owned, and changed hands about 3 weeks ago; said by the care-taker, who has been there twelve years, to have "the dirtiest, noisiest, worst-paying tenants in London". Appearance went far to substantiate this, broken windows, and a general air of neglect and bad management. They are not full L.b., as map. The rest of the street, 2 st. houses, purple, as map



mark the demolitions at the S. end. E. along Teoley St. past the first block of Hanover Buildings, p. as map, to

Parish St: pink, as map on W. side; on E. side the Work-house. At the S.W. corner is a chapel, and the d.b. houses shown on map S. of this have been demolished. Omit colour. On the W. side is

Cottage Row: 2 st. cottages; forecourts; houses on W. side only. L.b., as map. S. of it is

New Cottage Row: locked, but said to be the same. S.E. to Artillery St: On the N. side the Churchyard, a recreation ground, pleasant. All the houses on S. side except one unoccupied; all coming down. Omit colour. It is the same with the W. side of

Church St. as far as the railway. N. of Artillery St. no houses are left in Church St. except the Rectory on the W. side, and a new caretaker's house connected with the Board School on the E. These demolitions, achieved and in contemplation, are due to the Southern approach to the Bridge which is on the point of being made, and which, both N. and S. of the railway will be found to explain many pending changes. The widening of the railway has swept away the small d.b. court S. of Artillery St.

Sard's Rents, the long d.b. line S. of Charles St. has lost some of the houses at the W. end and some at the E.



Church Grove - purple L

Butler's Place - lb L

Coxon's Place - lb L

Tilbury Court - lb L

end have been slightly touched up. But the row remains a centre of desolation and squalor. Further S. is Church Grove: (now part of Coxon's Place): 2 st. cottages; trees, creepers, ought to be a pretty and refreshing spot, but the railway extension is disturbing it, and a good many of the houses have gone at the W. end. Rents for four rooms 9/-. Query from p. to purple. To the E. is Butler's Grove: which has never been so pretty, and in which the xxx houses are smaller as a rule (2 rooms rents 5/3 and 5/6). There is a general air of unsettlement, and a few of the houses here too have gone. Together with the Eastern continuation, now part of Coxon's Place (late Butler's) colour from p. and purple to purple throughout. To the S. is a tiny row of cottages Susannah Place: demolished on the S. and curtailed on the N. at the W. end, only 3 cottages remaining; from d.b. to l.b. (2 rooms per cottage; rent 4/6 ~~per cottage~~ E. by Butler's (Coxon's) Place to Fair St: pink, as map, with colour omitted just N. of the end of Charles St. for demolitions through extension of Beard School. At the W. end, corner of Artillery Lane, on the uncoloured space, is a new Polytechnic. Just W. of Coxon's Place is Tilbury Court: (not shown on map) 5 2 roomed cottages; rent 6/-; E. side only; uncoloured to l.b. A little further to



Sarnell's Court - lb

Artillery Lane W. side - pk

Matilda Place - lb

(11)

the W. also not shown on map is

Sarnell's Court: a few little cottages, taking up two sides of an irregular polygon, old-fashioned; poor, not squalid; uncoloured to l.b.

Charles St: is now a continuation (E) of Artillery St.; it is all School on the N. side; colour out there; and on the S. with a slight omission for demolitions, has improved; 2 and 3 st. houses; purple to pink. Along Fair St. and S. down

Artillery Lane: 2 st. houses; very good on W. side, where 2 or 3 have made way for a warehouse at the S. end. Query purple to pink on this side leaving the E. side purple. E. along Teeley St. to

Tanner St: E. side, 2 and 3 st. houses, shops etc. Garfield Terrace here, 3 st. tenements, built about 9 years ago; purple as map. On the W. side little but a public house. Near the railway, standing 20 yards back from the road, is

~~XXXXXXXXXXXXXXXXXXXX~~ Matilda Place: only 8 years old, but only 3 houses left owing to the railway; 2 st. houses; desolate, uncoloured to l.b. On the opposite side of Tanner St. further to the N. is

Queen's Place: little houses (S. side only) and big women; poor, but money probably not greatly lacking. L.b. as map.

The corner of Deck Head W. of Millstream Road now occupied by another block of



Hanover Buildings - ph

Millstream Road - lb

?

(12)

Hanover Buildings: uncoloured to pink.

Millstream Road: The part running N. and S. 3 st. houses  
(about half way down to where back of house is Rose Court; 4.5. yards of, map)  
on E. side; 5 rooms; rent 12/-; on W. side 2 st. houses.

Little difference between the two sides for which l.b. will be a better colour than the purple and d.b. of map. The part of the street running E. and W. is much poorer, and is very much like Woolf St. whose colour, d.b. it should take. The street is wide, but the houses present all the signs of a poor, out of the world, neglected corner.

Woolf St. (and Victoria Terrace its E. end,) narrow, crowded, rough, but said not to be as rough as formerly. Gossiping women; dirty children; squabbling and fighting boys. The whole place alive, presenting in this respect a contrast to many of the streets and courts that had taken up much of the earlier part of this walk, but the colour undeniable d.b. To the E. is

Rose Court: little houses, with a tiny row where the d.b. has been rightly inserted. The rest purple as map, but the Court takes no colour of its own on the E. side between the red and the d.b. Nothing but backs here.

Gebling St: mainly 2 st. houses; some shops; a dull street: purple, as map.

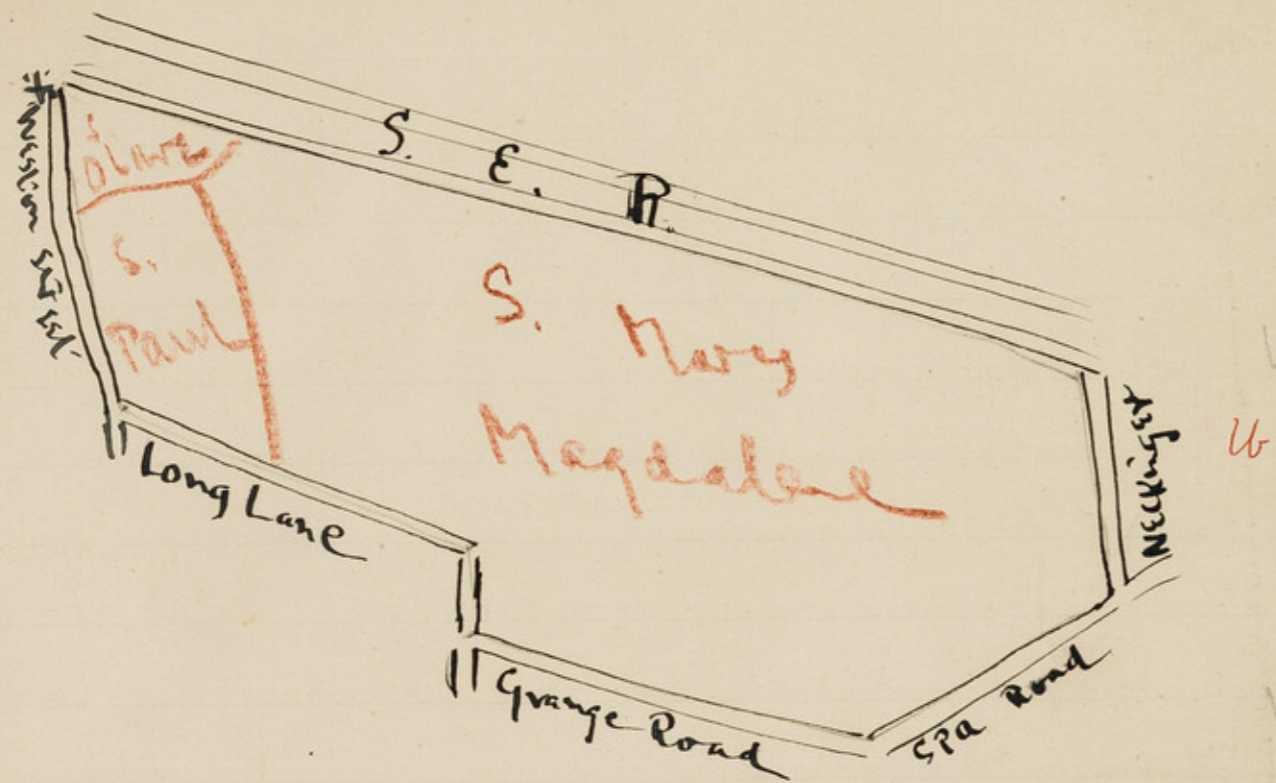


General Remarks.

The River, of which one hardly gets a glimpse, is none the less the pervading economic influence, its wharves and the adjacent warehouses providing the chief sources of employment. East of the Tower Bridge Courage's Brewery, though even there far less important than the River, should be especially mentioned.

Demolitions, ~~and~~ structural changes, and alterations in the street plans are mainly due to the Bridge, to the Southern Approach, ~~and~~ to the widening of the S.E.R. Railway, and to the increasing number of warehouses. Except in two or three streets E. of the Bridge, notably in Lafene St. and at the W. end of Gainsford St. whenever rebuilding has followed demolitions business premises have been put up. Demolition not followed by rebuilding, has been always due either to the Bridge or to the Railway. S. John's Churchyard provides a small but pleasant open space, and the Bridge a splendid and breezy thoroughfare;





S. Thomas St E of Fennin St  
- pk

Vinegar Yard - pk

† Starting point.

Notes of a walk with Watts in the area bounded on the N. by the Railway; on the E. by the Neckinger and Spa Road; on the S. by Grange Road and Long Lane; and on the W. by Weston St. the whole forming parts of the parishes of S. Mary Magdalene, S. Paul, & S. Olave's

(E.A.) June 7 and 8.99.

Starting from S. Thomas' St. S. down

Weston St: (to Melior St.) old fashioned houses on E. side: half of them down, N. end; the rest pink, as map. E. to Melior St: 2 st. houses; S. side only; here purple as map. N. up

Fennin St: E. side only, as map. 2 st. houses; purple.

S. Thomas St: a gap for a warehouse E. of Fennin St. then a 4 st. block; "Garden Chambers"; door shut; bell etc; believed to be let in 3 and 4 room sets. ? purple to pink.

Vinegar Yard: no colour, save for two new dwellings, over stabling on N. side. If shown, add two pink spots. On S. side are

Rowley's Buildings: 2 st. some houses very poor; wizened children running about; ? from l.b. to d.b. Close by is

Melior Place: houses on W. side down; chapel, soup kitchen, etc. On E. side, 2 st. houses; forecourts; l.b. as map.

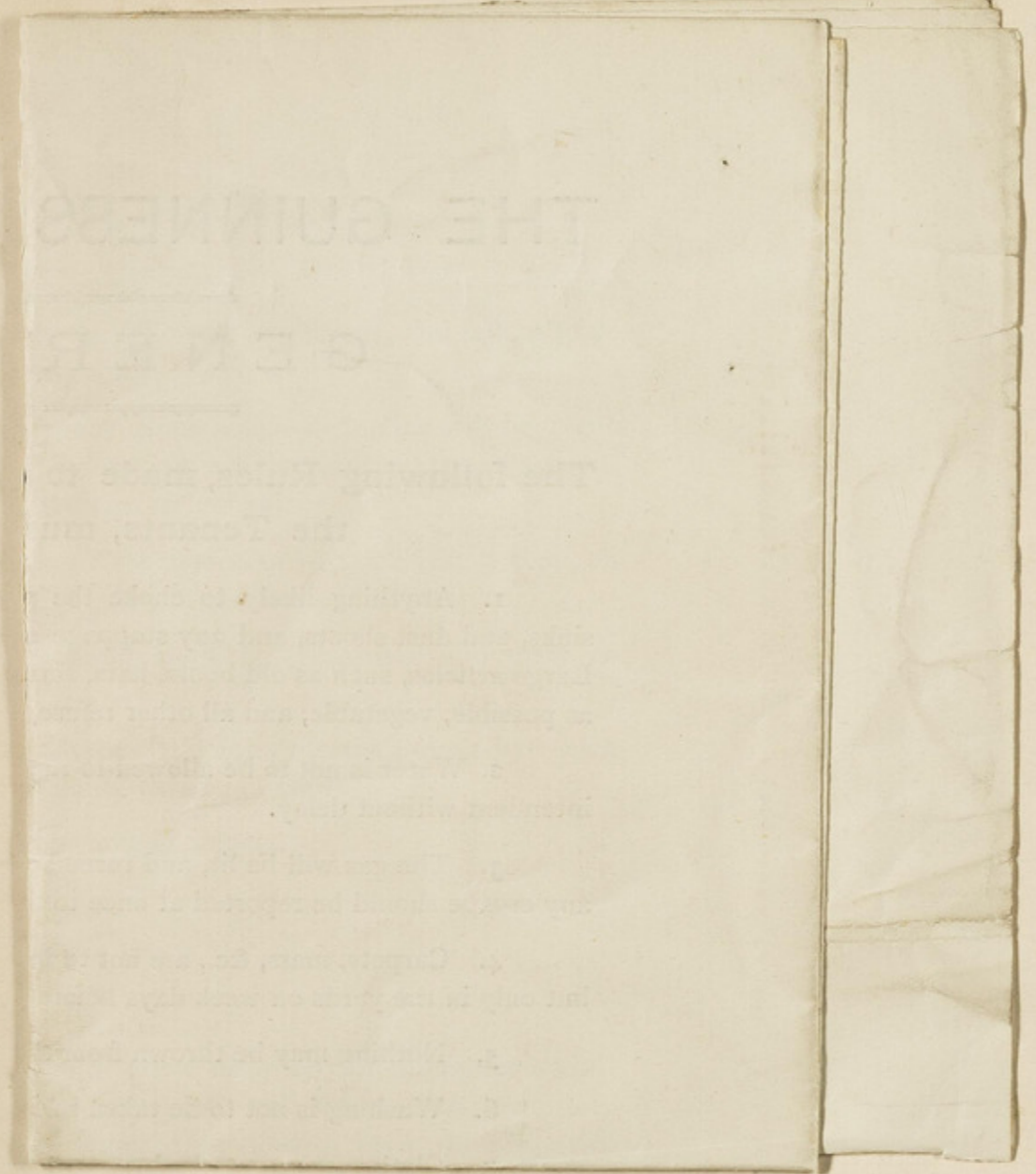
To the S. of the E. end of Snows' Fields is

White Lion Court: 2 and 3 st. houses; "very rough at times and, from its appearance, always miserable; D.b., and, if



possible, colour should be shown on both sides.

W. of this court on the S. side of Snows Fields the place has been metamorphosed by the demolition of the network of dark blue courts shown in the map (with the exception of Ship and Mermaid Row, see later) and the erection on a great part of the site thus freed some fine blocks of the Guinness Buildings. The rooms are let in set of 1, 2, 3, and 4, at rentals from 2/9 and 3/3 for single rooms to a maximum of 6/9. The caretaker turned up his application book, and the wages we found entered on turning over a few pages ranged from 6/- in the case of a widow, to 26/8 in the case of a man wife and family. Practically 25/- a week is taken as the maximum wage at which tenants will be accepted, anyone applying who is earning more than this having very little chance of getting in unless his dependent family is large. The accompanying form is used for applicants. Management appeared excellent, and the blocks are full. On the opposite side Snows Fields present a great contrast, the houses from the E. end to Weston St. being for the most part old and tumble-down. There are a few small shops, and a space should be omitted in the line of colour for Arthur's Mission Hall. Many very poor occupants, and possible that the local displacement has brought the N. side down. Colour from n. to purple, like the Guinness Buildings.



*Snowsfields - purple*

*the bars held  
Guinness*



No. \_\_\_\_\_

# FORM OF APPLICATION FOR TENEMENTS.

To

THE TRUSTEES OF  
THE GUINNESS TRUST,  
5, VICTORIA STREET, S.W.

Date \_\_\_\_\_ 189

## THE GUINNESS TRUST BUILDINGS.

I desire to become a Weekly Tenant of \_\_\_\_\_ Room \_\_\_\_\_, being Number \_\_\_\_\_ on the \_\_\_\_\_ Floor of the SNOW'S FIELDS BUILDINGS, at a Rent of \_\_\_\_\_ per week, with an extra charge of \_\_\_\_\_ per week for use of Blinds, Bath-rooms, Club-room, Hot Water Supply and Chimney Sweeping, payable in advance, as from the \_\_\_\_\_ next, and I agree on taking possession to be bound by, and comply in every respect with, the conditions of occupation printed on the other side hereof.

Name ... .. \_\_\_\_\_

Address ... .. \_\_\_\_\_

How long have you lived at your last address ... \_\_\_\_\_

Whether Married or Single ... .. \_\_\_\_\_

Number of Children living with Parents ... .. \_\_\_\_\_

Ages of Boys last Birthday ... .. \_\_\_\_\_

Ages of Girls last Birthday ... .. \_\_\_\_\_

Have Parents and Children all been Vaccinated ... \_\_\_\_\_

Have all over 7 years of age been Re-Vaccinated... \_\_\_\_\_

Whether in receipt of Parish Relief... .. \_\_\_\_\_

Occupation ... .. \_\_\_\_\_

Weekly Wages earned by yourself and Family ... \_\_\_\_\_

What is your Employer's Name ... .. \_\_\_\_\_

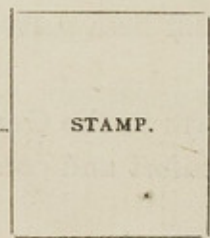
What is his Address ... .. \_\_\_\_\_

Do you agree to abide by the General Rules ... \_\_\_\_\_

Signature.

Applicant.

Tenancy accepted on behalf of the Trustees of the Guinness Trust, the Landlords.



Superintendent.

Date \_\_\_\_\_



## CONDITIONS OF OCCUPATION.

1. The Tenant agrees to act in accordance with the following conditions, and failure to do so shall be sufficient cause for the determination of the tenancy.

2. To pay a deposit of 3/- on entering upon tenancy, from which deduction will be made for damage found on giving up possession, and any balance left will be returned to the Tenant. The decision of the Superintendent as to amount of deduction to be final.

3. To pay the Rent weekly in advance, between the hours of 9 a.m. and 5 p.m., on Mondays, at the Superintendent's Office. No arrears of Rent will be allowed.

The Printed Form of Receipt issued by the Trust will alone be recognised and must be retained by the Tenant.

4. To pay on demand for all damage, fixtures removed, and injury to the premises by such removal, and for all broken panes of glass, and broken blinds, tapes and cords.

5. Not to sub-let any portion of the Tenement, or take in lodgers.

6. Not to keep any animals in the Tenement.

7. Not to use the Tenement as a shop for the sale of goods.

8. Not to sell intoxicating liquors of any kind.

9. Not to misuse, improperly occupy, be guilty of, or allow disorderly or intemperate conduct in the Tenement, nor in any way cause annoyance to the neighbours. Drunken and disorderly Tenants will be subject to have their tenancy terminated immediately, and to forfeit the rent paid.

10. To keep the Tenement and its windows clean, and colour-wash it once a year, and in turn with other tenants on the same floor, clean the Water Closets, Laundries, Sinks, Windows, Passages, Landings, Walls, and Stairs, to the floor below, and if on the Ground Floor, to clean as far as the Entrance.

The Stairs and Passages to be swept daily, and on Saturday washed before 10 a.m.

11. To allow the Landlords, or their Agents, at reasonable hours, to see the condition of the rooms.

12. To report all the Births, Deaths, and cases of Infectious Disease to the Superintendent without delay, and to have any case of Infectious Disease removed to the proper Hospital. All removals to Hospital to be reported to the Superintendent.

13. Notice in writing on either side, or payment of a Week's Rent by Tenant in lieu of notice, shall be sufficient to determine the Tenancy. All notices must be given on Monday to vacate on the following Saturday.

14. If the Weekly Rent is not paid in advance when due, or if the Tenant does not quit and deliver up possession according to Notice, the Landlords, or their Agents, shall be entitled immediately to enter upon, and take, and resume possession of the premises, and to eject, expel, and remove the Tenant and all occupants and his and their goods therefrom without any Legal Process, and as effectually as any Sheriff might do for taking possession of the said premises, and this provision shall be a sufficient defence to any proceeding in respect of any such possession being so resumed.

15. To conform to the General Rules to be issued by the Landlords, and posted up in the Buildings, for the comfort and convenience of the Tenants generally.

## THE GUINNESS TRUST BUILDINGS.

### GENERAL RULES.

The following Rules, made to ensure the Comfort and Convenience of the Tenants, must be carefully observed:—

1. Anything likely to choke the pipes must not be put into the water closets, troughs, sinks, and dust shoots, and any stoppage should be immediately reported to the Superintendent. Large articles, such as old boots, hats, tins, &c., must be taken down to the dust bin; and, as far as possible, vegetable, and all other refuse, should be burned.

2. Water is not to be allowed to run to waste. Any leakage must be reported to the Superintendent without delay.

3. The gas will be lit, and turned off by the Porter, and no Tenant is to tamper with it; any escape should be reported at once to the Superintendent.

4. Carpets, mats, &c., are not to be cleaned, or shaken on the landings, stairs, or passages, but only in the yards on week days before 10 a.m.

5. Nothing may be thrown from the doors or windows.

6. Washing is not to be taken in from persons who are not living in the Buildings.

7. Clothes are not to be hung out of the windows, or in the passages; they should be dried in the Laundry.

8. Parents are to warn their children not to loiter or play or make a noise on the stairs, landings, or passages. Games of ball or tip-cat are not allowed in the play-ground. Parents are responsible for the cost of replacing glass broken by their children.

9. Nails or screws must not be driven into the walls, or woodwork, except at a distance of three inches from the ceiling.

10. Each Tenant in turn will have the use of the Laundry on his floor on one day in the week, and is to leave it clean, and the copper dry. The Tenant will have the key of the Laundry for the day only, and will be responsible for leaving it the same evening with the Superintendent, or with the Tenant next entitled to the use of the Laundry.

11. Tenants are held responsible that flower-pots are so secured as to prevent their falling from the windows.

12. In Dwellings with flat roofs, the doors leading to the roofs should be carefully secured to prevent access by strangers.

13. *The Superintendent and Porters are not permitted to accept gratuities from Tenants, or applicants for rooms.*

14. The Superintendent is instructed to prevent overcrowding and to report all cases of families too large for the accommodation afforded by any tenement.

15. Tenants are to report to the Superintendent the loss of keys, and to pay the cost of replacing them.



Ship & Mermaid Row - lb

Tyer's Gateway, N. side, lb

Cundell's Place - lb

(3)

S. down Weston St. to

King's Row: no separate colour, leading S. to

Ship and Mermaid Row, the 9, end of which is all that is left of the big dark blue patch. It appears to have been improved by being robbed of its d.b. neighbours, and the little patch (2 st. houses) goes from d.b. to l.b. S., by Weston St. to

Market St. (Manning St. on the map); mainly non-residential, the Leather Market on the S. and warehouses and offices on the N. greater part of the N. At the N.W. corner a few 3 st. houses, mostly with offices on the ground floor. Pink, as map.

Along Manning St. and N. up

Tyer's Gateway: ~~xxxxxxxxxxxx~~ little change here, and what there is resembles that of Weston St. a few houses having given way to warehouses. Thus patches of purple at the S. W. and N.E. go out; the rest of the colour remains, 2 st. houses, purple as map. To the N. is

Cundell's Place: 2 st. houses; asphalted; dirty children; purple, to l.b. Back, by Weston St. to

Long Lane: to Star Corner; pink-barred, as map. and N. up

Bermondsey St.: shops etc. mainly 3 st. houses; the N.E. corner is clear, and for the rest pink, as map. On the W. side are

Steven's Court: the d.b. patch near the S. end. Closed; colour omitted.



Royal Oak Yard - db

L

Lamb Alley - db

d.b.

L

Upper Russell St - lb & pk

L

Walker's Court - db

L

(4)

97

Royal Oak Yard: not coloured on map; 4 or 5 2 st. houses; old; N. side only; colour d.b.

Lamb Alley: mostly old 2 st. plus attic houses; tiled; l. b. as map. The Alley leads to

Upper Russell St: At the W. end is "The Fleece" on the N. side, but no dwelling on the S. side; query omit the 2 patches of purple. The rest of the St. where coloured has small, old, tumble-down houses. Purple, to l.b. A glimpse into a fellmonger's yard showed gruesome piles of sheep's heads, and, with others, a woman skinning them -- active, strong, virile, horrible. Lying N.W. of the street

Walker's Court: a tiny place; very poor; not shown on map. Should be d.b. Back to Bermondsey St. to

Carnarvon Court (nearly opposite the Police Station) 4 or 5 2 st. houses; l.b., as map. On the E. side of Bermondsey St. starting from the S. are

Bell Court: 3 st. houses; newly painted, but a dreary well of a place; "Paint it as black as you can" said my guide. "It is a little hell upon earth", but when I pressed for a diagnosis it appeared to resolve itself into ~~enxxxx~~ the common ~~enxxxx~~ Bermondsey charge of drunkenness and resulting disorders. D.b., as map.

Medley Place: 3 st. houses; no colour on N. side. S.d.b., as map.

Black Swan Yard: (S.E. of Police Station); 2 st. houses;



Tanner St. S of Railway - pk & pur. L

Kinross St. - central part - purple L

(5)

asphalted; "rather rough at times"; d.b. as map.

Crucifix Lane (E. from the N. end of Bermondsey St.); 3 st. houses; poor shops; purple, as map. Under the

railway arches, (a roadway on this side corresponding to what Henry St. will be on a larger scale on the N., and, from a police and public morals point of view, one of the most undesirable kind -- so retired, dark, and hidden away, but said by Watts, not to lead to much trouble,) S. to

White's Ground: warehouses etc. the Ground now includes Gun Alley, and such houses as there are in both are 2 st. and purple, as map. At the angle is

Musk Court: an untidy spot; l.b. as map. E. along

Tanner St.: improved, and, from the W. end to Church St. purple, to pink. Omit colour on S. side, E. of Sun St. for School, and on N. side E. of Church St. for clearance. N. E. corner purple, as map. On S. side is

Kinross St.: 2 st. houses; the middle part better than the rest, and the houses larger -- 4 rooms and kitchen, rent 9/- and 9/6. L.b. to pink. The rest l.b., as map. Went in side a house on the W. side; 3 rooms and kitchen, rent 5/6. Girl working at brushmaking; dirt appalling; a tiny child, the picture of dirt, undergrowth and neglect, playing forlornly in a grimy wooden box. The people of this particular house probably below the standard of the street.



Brunswick court purp.

1 db house at SW.

Church Street - pk

Sun Street - lb

Mellick's Place - lb & db

(6)

107

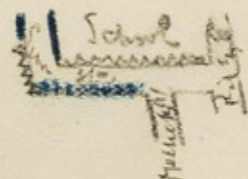
Davies' Buildings: (N. side of Tanner St.) 2 or 3 2 st. 2 houses; l.b. as map. A little further E. is

Brunswick Court: 2 st. houses, built a few years ago, since the map was made; 4 rooms and wash-house etc. arranged for two families; very respectable; rent from 11/- to 13/-.

Uncoloured to (pink). A woman living at the S. end to whom I spoke about the street said that all she had to complain of as to noise came from a house in the court to the West of Brunswick Court. It is an isolated house; tumble-down and miserable in appearance; and might be coloured, d.b.

Church St: only one house, E. side, occupied by foreman or other employee of the vinegar works. Colour pink.

Sun St. has been a good deal altered, and now runs through E. to Riley St. 2 st. houses; purple to l.b. Omit colour to plan.



Mellicks' Place: 2 st. houses; forecourts on the W. side, flush on the E. "Very rough, always has been". Gossiping, untidy women; many broken windows etc. L.b. to d.b. perhaps on both sides, perhaps on E. side only. On the E. side, in one house at which I asked the question, there were 4 rooms; 2 families; rent 8/-. On the N. side of Tanner St. is

Bermendsey Place: paved cul de sac; terrible children;



Finnimore Court - lb

Millstream Road - pk

Riley Street - purple & lb

dirt everywhere; doors led straight into the rooms; 3 rooms to a house; rent 6/-; one of the most miserable courts I have seen; d.b. as map. Further E. is

~~Bannockburn~~  
Finnimore Court: 3 st. houses; 4 rooms and kitchen; rent 7/6; houses on W. side only. Colour purple to l.b., omitting on E. side.

Nearly opposite on S. side of Tanner St. is

Russell (<sup>not</sup> late Tidal) Place: some houses down on E. side; colour omitted here; the rest 2 and 3 st. houses; p. to purple. E. is

Maltby Road: 2 st. houses; no Vestry Hall, but warehouses on site indicated by map for this; purple, as map.

Millstraem Road, on this side of the railway has only one house; 2 st. on N. side. Colour pink.

Stanwerth St: 2 st. houses; flush; ~~XXXXXXXXXX~~ passage entrances, but poor little places; a dull street, and typical of several round here. Purple, as map. So also

Larnaca St: 2 st. purple as map.

Riley St: 2 and 3 st. houses; note that Sun St. breaks the line W. side; purple, as map, with additional colour on E. side, omitted apparently in error, as the houses are not new. On the same side S. of Prince St. colour has also been wrongly omitted, but here it should be l.b. for a badly built row of ~~at~~ 3 st. houses, one room deep.



Abbey Street - purple L

Star corner E side - purple L

The Grange: mainly warehouses; Purple, as map.

Abbey St: some shops, and generally larger houses; but "more people in them", and "the general character of the street very much like those lying to the North". Appearance bears out this opinion. Pink to purple, right through.

N. up Riley St. to

Purbrook St: (late Park St.); 2 st. purple, as map. To the S. are

Prince and Stevens Streets: like Purbrook St; purple, as map. To the W. is

Brook St: somewhat better than its neighbours, and pink rather than the purple of map. The houses are 2 storeyed. The new S. approach to the Tower Bridge will come here, running, by Sun St. through the Tannery, Brook St. across Abbey St. and Long Walk, by Bermondsey Square, into Grange Road.

Star Corner now forms part of the Bermondsey New Road; p. barred as map on W. side. On E. side a warehouse (new) at N. corner, and S. of this a new block of dwellings, red brick, 3 st. said to be let in sets of 3 and 4 rooms; at rents from 7/6 to 10/-. They run through into Bermondsey Square; look rather untidy, and as though either badly built or badly managed. Colour purple, or pink. The School shown on the map is not there, and from this point to the pink-barrage at the corner the side is clear.



Bermondsey Square - pk & pur. L

Opp. H. side ✓. E. side ✓ p. w.  
omitted.

Grange S of Abbey St. - pur. pk & lb L

S. side Grange ✓ (from p.)

Paulin St. E & W of Grange purple L

Dix's Place - N. of Paulin St. - purple

Bermondsey Square: Buildings, as mentioned above, purple; the rest irregular in style; some down at S.W. corner; t with this omission and the buildings, pink as map. E. is Long Walk and adjacent d.b. courts. The whole block is coming down, and already many of the houses either demolished or closed. Most colour therefore omitted. To the E. is a very old, wooden, break-neck house -- a relic of the an older style. It is d.b. like the rest. The whole corner is a bad one, with a bad name. A group of women passed, the kind who "would like to go for you if they get a chance" thought we were prospecting: "Goin' to turn us out of our 'ouses? Y'll 'ave to find us some if you do".

Fendall St: 2 st. purple, as map.

The Grange: (S. of Abbey St.): mainly 2 storeyed houses; v very much the same as Fendall St. as far as Horney Lane. To this point p. to purple. Below the Lane only three houses one, pink, on the E. side, N. of Grange Yard, and ~~two~~ d.b., on the W. side, rather lower down.

Paulin St. (W. of The Grange): 2 st. houses; l.b. to purple; add colour for three or four new houses, at N.W. corner; 5 rooms and offices; for two families; rent 10/6 and 12/-. omit colour S.W. corner. The part of the St. E. of The Grange, is purple, rather than pink; 2 st. houses. N. and S. in a direct line (the map is wrong) is

Dix's Place: N. of Paulin St. 8 2x 2 st. cottages; poor.




Maltby St S of Abbey St - purple

Neckinger - purple (1 red house)

Limasol Street - lb

S. of Paulin St. 3 st. dwellings, let three rooms for 6/6 and 7/-; badly built; crowds of children; also poor. The whole Place, N. and S. pink to l.b. The line of d.b.

E. of The Grange, is apparently meant for Blackman's Court: only two 2 st. houses, one on N. and one on S. side, thus:  Colour d.b. as map. To the E. of Dix's Place is

Paulin Place: 2 st. houses; ~~pink to purple~~ <sup>as map.</sup> like the street.

Maltby St: (S. of Abbey St): also coloured above standard; 2 st. houses; goes from p. to purple.

Herney Lane: S. side, p. as map; N. side has no separate colouring taking that adopted for The Grange itself and Dix's Place. E. to

Neckinger: 2 and 3 st. houses on W. side; poor; old for the most part; pink to purple. Below the colour shown on the map is the residence of the local Surveyor; red. Also Wash-houses etc. On the E. side are big tenneries (Bevingtons).

Limasol St: 2 st. houses; 4 rooms and wash-house etc. rent, 8/-; children in swarms, and the st. narrow, dirty, and crowded; purple, to l.b. W. along

Spa Road: some shops; 2 st. houses; many very small. Add colour for Spa Mansions (1889) 5 st., shops at basement; venetian blinds in nearly every window -- green signs of pink, like the rest of the street, with an omission for the space



Turner's Retreat - black

L

✓  
black

Grange Yard - pk


L

Grange Walk - purple

L

an ✓

occupied by the new Free Library.

Turner's Retreat: out of the Grange at the S.E. corner, said to be "very rough; one of the roughest we've got" it told its own tale in its windows, its women and its children -- in everything in fact. L.b. to d.b. 

Nearly opposite, on the W. side of the Grange, are the two dark blue houses already mentioned. In

Grange Yard there is no colour, unless pink be added on the S. side, about half-way down for a new foreman's house.

Grange Walk: (E. end to Fendall St.) N. side p. to purple; S. side, some colour omitted at E. end, and the rest pink as map. (W. of Fendall St.) N. side, purple, as map. S. side, mostly rebuilt, and somewhat improved; 2 st. houses. Query purple to pink. Apart from the re-building, many of the houses in this street are very old.

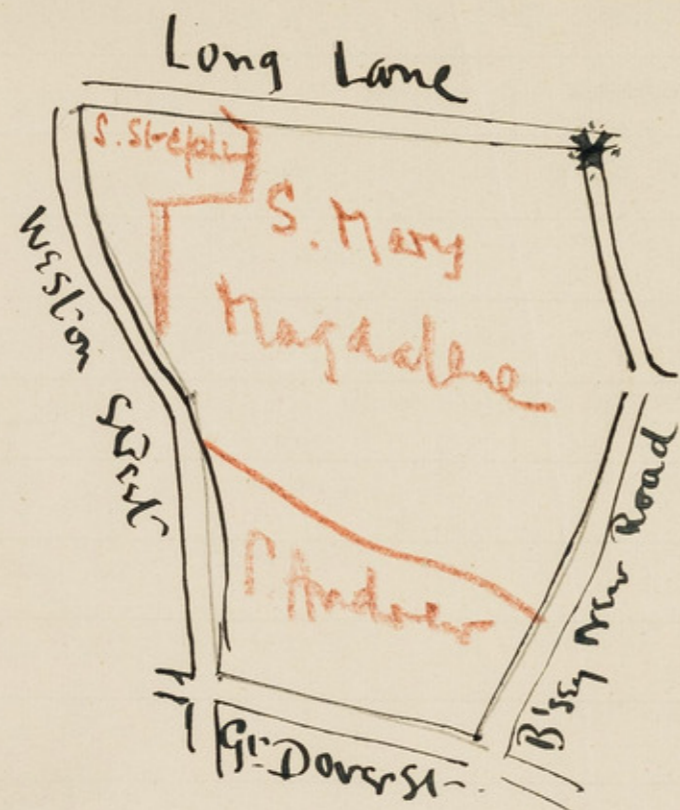
Grange Road remains p. barred as map. A good deal of re-building, sheps etc. tram line here.

Briggs' Place: (N.E. side) rebuilt, stable s etc. Omit ~~ca~~ colour.



N. of the Railway one smelt the River at evry turn; here it is leather, not at its sweetest stages of manufacture, that ~~the~~ pervades the atmosphere. The Market is included in the area covered, and some considerable tanneries and fell-mongers' yards. There is thus much ground clear of dwellings. Such as there are are mainly 2 storyed. There are no considerable block dwellings, except the new Guinness blocks in Snows' Fields, and the only important clearance so far effected has been on the site these occupy. Changes of some importance are, however, in progress, for the Approach already mentioned to the Tower Bridge. Its line will not however take in any of the bad remaining dark blue patches. Of these Long Walk has nearly gone, and the worst that are still untouched lie to the E. of Bermondsey St. There are others scattered about, and the district as a whole is coloured above its present standard in the map, always excepting the area now taken up by the Guinness Buildings.





Victoria Place - lb

Wilds Rents - lb

l.b.

\* Starting point.

Wilderness St. - lb

Notes of a walk with Watts in the area bounded on the N. by Long Lane; on the W. by Weston St., on the S.W. by Great Dever St. and on the S.E. by Bermondsey New Road. forming part of the parishes of S. Stephen, S. Mary Magdalene, & S. Andrew.

(E.A.) June 9.99.

Starting from Star Corner, W. up Long Lane to Smith's (now Tav) Buildings: at N. end small 2 st. two-roomed houses, with yard, rent 5/-; newer S. of Edward St. but all poor, and l.b. as map. To the N.W. is Victoria Place: tiny cottages, some very dirty, some very clean. Part down S. side, ~~KXXXX~~ N.E. end. query d.b. to l.b. Omit colour for as noted. N. by Edward St. to Wild's Rents: now continued W. to Rethsay St. but with no dwellings in this W. bit; colour perhaps from pink to purple. To the N.W. is Elim St: 2 st. houses; flush with pavement; some l.b. in the street but the colour of the map, d.b. preponderates, and remains. On the S. side is Wilderness St: 2 st. houses, flush as in Elim St. no passages at the entrances as a rule; one or two poor little shops; colour from purple to l.b. Biffins' Place: leading from Long Lane ~~ixxxx~~ to Weston St. and not to Elim St. as shown in the map, 2 st. houses; 5 on S.E. and one on N.W. side, at the S. corner. Creepers and signs of care in some of the houses, but the brightest



*Rephidan St. - E side - lb*

*Princess Street - db*

*Russell Place N side lb*

had, I found, only two rooms, rent 5/-; the other three  
houses were not much larger, but had four rooms. Costers  
etc. Colour l.b. as map.

Winter Square: (S. side of Long Lane); 4 2 st. houses; fac-  
ing N.; l.b. as map. By Long Lane to

Weston St: (to Rethsay St.) pink and purple as map. S.  
down

Rephidan St: rebuilt on E. side; 3 st. houses; let by floors,  
7/9 to 8/3; look badly built and poor; but better than the  
W. side; colour l.b. instead of d.b. as map. Houses on W.  
side 2 st. very poor and miserable; d.b. as map. To the  
S.W. is

Hunter St: a short and squalid centre of gross and miserable  
life; d.b. as map.

Petier St. at this N. end is very much the same; houses N.  
side only; 2 storeyed; d.b. as map. On the S. side the  
Board School. On the opposite side of the School is

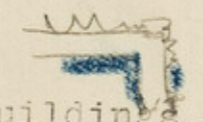
Princess St (late Regent St.): 3 st. houses and buildings;  
thoroughly low-class; the street runs through from Rephid-  
an St. to Great Dever St. and has been widened. But this  
is its only improvement; standard appears to have gone  
down; colour d.b., instead of purple of map. By Weston  
St. into Great Dever St. in which on N.E. side is

Russell Place: runs through now to Noel St; on N. side  
stables etc. at W. end; then 4 st. buildings, "Stewart



House" and others; let in 2,3, and 4 rooms at rents from 4/6 to 8/6. All in very bad repair. Colour from purple to either d.b. or l.b. On S. side, one house only to corner; then Clifton Buildings, as in Neel St. Better than the other side a good deal; purple as map.

York (now Ackwarth) St:( S. of Russell Place) carried through at a right angle to Bermondsey New Road; rebuilt, and only two houses on the N.E. side; the rest warehouses, timber yard etc. On the other side houses with 2 st. and attics; dirty and rapidly getting slummy; l.b. as map, to plan.



By Bermondsey New St. to Neel St:the Buildings, already mentioned in Russell Place; let in sets of two rooms with wash-house; rents 6/6 and 7/6; decent; poor children about, and some women; structure misleading and suggests a colouring above real standard, which is ~~the~~ purple ~~xxxxxx~~ rather than the pink of map.

Potier St. (B.New Road end) consists of 3 blocks of dwellings on N.E. side; one of them has been closed, and all, should be; they are of the worst type of "medel"; 4 storied; let in 1 and 2 rooms, at, according to the information of two terrible women living here, 4/- and 6/-. Colour from l.b. to d.b. To the N.E. is

Green Walk:on S. side the buildings of Potier St. and the here from l.b. to d.b. On the N. side 2 st. houses; pink

Noel Street - lb + pur

Potier Place - db

Green Walk - lb + db



Alice Street - lb L

Rothsay St. - lb an l. b. L

Hargreave Square - lb L

Williams Street - lb L

(4)

to l.b. N. of Alice St. a decent house has been built for an employee of Wix's, and if coloured this should be pink.

The district as a whole just here appears to have declined somewhat, and few of the streets have an appreciable representation of the "pink" class. Thus

Alice St: 2 st. houses; flush with pavement; goes from purple to l.b.

Rothsay St.: (S. of Wilds Rents) 2 st. houses; goes from pink to l.b. and

Hargreave Square: (on the N. side of Alice St.) 2 st. houses with forecourts, also from purple to l.b. Crowds of children here; many doors open; dirt abundant; the houses are four-roomed with wash-houses and small yards; rents 9/- were most ~~are~~ said to be sub-let by the occupier who gave me information.

S. of Alice St. is as map, but Hargreave Place: 2 st. houses; l.b. ~~and~~ the colour should be shown on both sides, if possible.

Williams (now Ferrand) St: 2 st. houses, flush with pavement; 4 rooms, rents from 8/6 to 9/6; a respectable woman who had been living in the street for some years said that it was "a deal noisier" than it used to be, and that most of the houses either had lodgers or two families in them. The noise complained of was mainly that from children, newcomers being generally charged with large families,



Decima Street - lb

Star Place - lb

(5)

123

almost a sign of increasing poverty. Colour <sup>l.b.</sup> ~~purple~~, instead of ~~the~~ purple of map.

Decima Street (late Edward St): 2 st houses at N. end; l.b. here, as map. S. of Tay's Buildings, 2 and 3 st. ~~2~~ houses; a very few shops; houses down on E. side for about half the street from the S. end. Colour purple, <sup>l.b.</sup> as map.

Marigold Court: (out of Bermondsey New Road) colour out on S. side, all houses being down save one. N. side decidedly poor, ~~and~~ the upper end being particularly miserable. 2 st. houses; colour d.b. instead of l.b. as map.

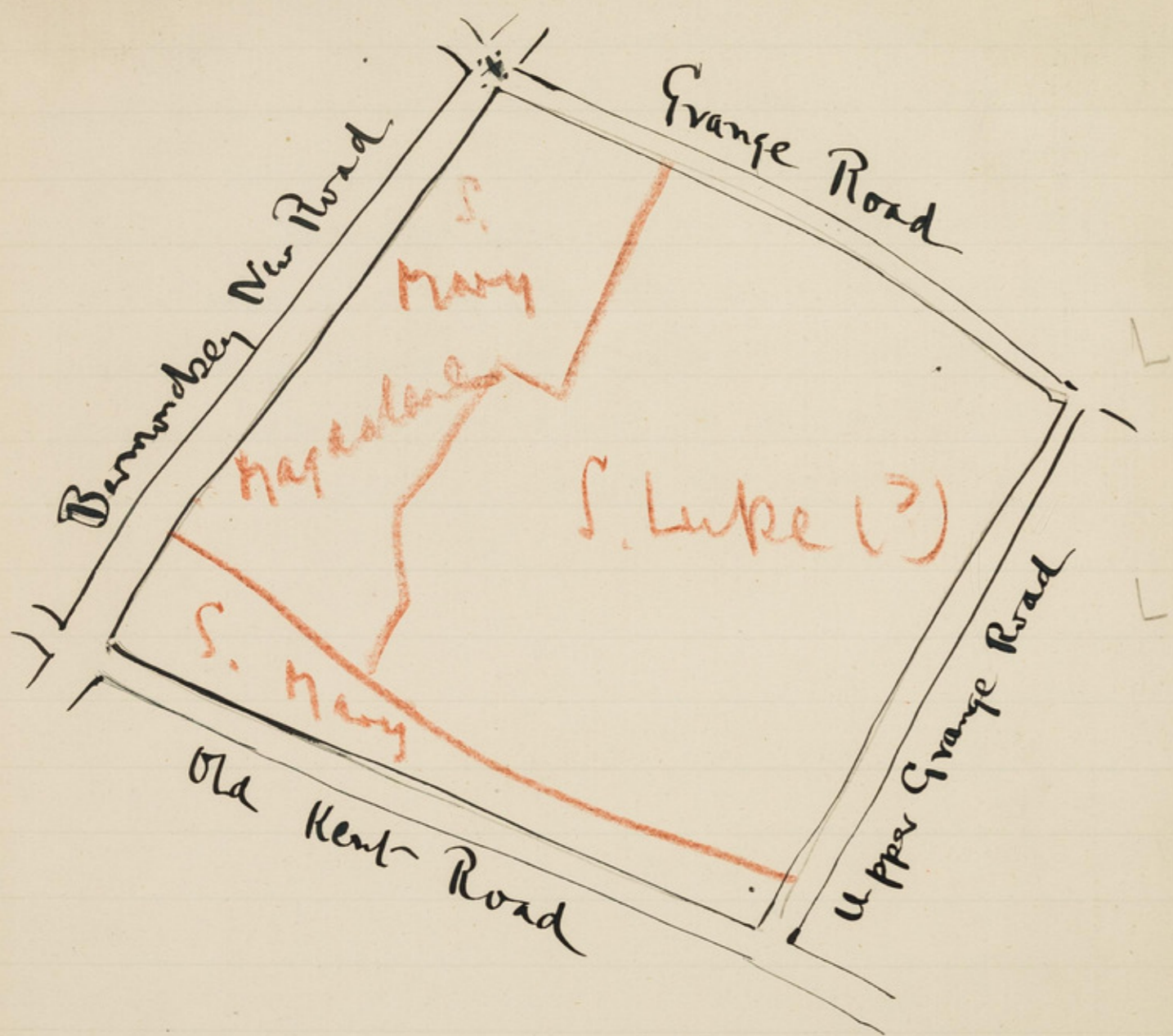
Star <sup>Place</sup> Court (further North): 2 st. poor little houses for the most part; drains up, and everything rather forlorn; colour l.b. rather than purple, as map.

Bermondsey New Road: pink barred, as map, coloured perhaps as a thoroughfare and as a busy market street, than to the standard of many of the occupants. The street will be the S. continuation of the new artery that is being made to the ~~Bridge~~ Tower Bridge, and its importance is thus likely to increase considerably in two or three years' time.



This small area forms part of the Grange Road Police Sub-Division, and structurally has changed little, the most important alteration being, perhaps, the shoddy buildings that have been put up on the E. side of Rephidan St. Poor though the colouring of the map suggests, the actual level is still poorer, and several streets go from purple to light blue. Rephidan St. E. side is I think the solitary exception of improvement in the ~~xxxxxx~~ shade of colouring, and this is probably only temporary. The new houses seem to be made for speedy deterioration.





Webb Street 5 blocks of Bldgs - pk

\* Starting point

Notes of a walk with Watts in the area bounded on the W. by Bermundsey New Road; on the N. by Grange Road, on the E. by Upper Grange Road, and on the S. by Old Kent Rd. forming part of the parishes of S. Mary Magdalen, S. Mary, & S. Luke (?). (E.A.) June 12, 13. 99

Starting from Star Corner along the Bermundsey New Road to  
Coulsten's Buildings: 2 st. houses; d.b. as map, with additional colour on W. side, omitted apparently in error. The entrance through to Wood's Place is planked up, and the Buildings are thus a cul de sac.

Webb St. (to the S.) has been much altered, four new blocks of 4 st. buildings having been put up on the W. side, and one at the S.E. corner, S. of Paragon Place. All belong to the ~~xxxxx~~ L.B. and S.C. Ry.; rooms let in sets of from 1 to 3, at rents for 1 room, of which there are very few, 2/6 to 3/-; ~~xxxx~~ for two rooms, 4/6 to 5/-; for three rooms, from 6/- to 7/6. Watts lives ~~in~~ here; says they are convenient, and ~~xxxx~~ very quiet. In the 5 blocks 70 police are living; many railway men etc. All built 3 or 4 years ago. Colour pink; omit d.b.

Paragon Place: l.b. as map, with an emission on N.W. side for wood yard. The Place leads into

Wood's Place: all d.b. as map, and all Wood's Place, not Grigg's, as shown in the map. All the latter lies on the



Brandon Street - lb

John Street - lb

(2)

129

other side of the Grange Road. S.W. of Webb St.

Cross St. disappears, and, to the S.

Swan Mead loses its colour (l.b.) the houses being down.

Further building of blocks is said to be in contemplation in this neighbourhood. N. up

Branden St: houses at S.E. corner have gone; omit purple.

The W. side, 2 st. houses, purple, as map. Colour should be omitted in the middle of the line of houses for a warehouse. Further S. is

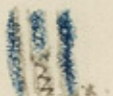
King St: (new part of the new Leroy St.) gloomy and depressing; on the E. 2 st. houses; on the W., with omissions for a big warehouse, are 2, 3, and, at the S.W. corner, 5 st. buildings. Continue colour to end, but all d.b. It was dust-collecting afternoon; the carts were on their rounds and almost every house had its pail outside, most of them quite full. The carts collect on Monday and Thursday afternoons, and a woman said that they did so with great regularity; why the people "had no cause to complain". A water-cart came along while we were in the street, freshening up the place with its disinfecting spray. It seemed a good thing that this should follow the dust-cart, but whether the meeting of the two was by chance or arranged, I do not know. It appeared, however, that the sanitary authorities were alive.

John St. (now the W. part of Leroy St.) W. half of S. side



Bermondsey & Osborne Buildings - db

an l.b.

131  
clear, and notices up for building sites; further E. on  
(S. London Wesleyan)  
this side a School, now a Mission Chapel; At N.W. corner  
4 st. buildings, ~~xxxxxxxxxx~~ with great names attached  
Milton, Wordsworth, Spencer (sic) and another; let in 2,  
3, and 4 rooms, the last only in the basements; rents for  
two rooms, the number occupied by my informant, 5/3 and  
5/6. purple, as map. The rest of the street, mainly 2 st.  
houses; a shop or two. Colour ~~xxxx~~ purple, not pink, as  
map. Back into B. New Road, and S. down  
Bermondsey Buildings and Osborne Buildings: all alike; 2  
st. houses. "Much the same as King St." Query d.b. and l.  
b. to d.b. all through. Colour to plan:  The un-  
coloured part is open yard. Women living at the S.E. cor-  
ner were inquisitive as to our errand, and at the moment  
a blind man of perhaps 26 or so, came up and joined them.  
He was clearly at home; smiled, looked happy, and spoke  
in a quiet voice. After a few seconds he asked a woman  
to give him "his thing"; "What, are you goin' out" and she  
disappeared in ~~in~~ the house. A few minutes later we came  
across him again, playing a banjo outside a public-house  
in the Old Kent Road, and singing to his own accompaniment.  
At the Buildings he had been an ordinary mortal, afflict-  
ed, but quiet-voiced and pleasant-looking; here he was t  
transformed into the street musician -- his notes strident,  
and his looks ~~xxxxxxxx~~ strained.



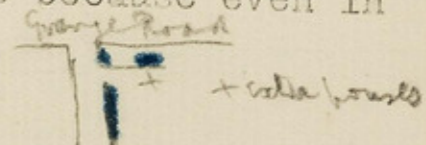
Aldred St:(new part of the new Aberdow St.) 2 st. houses  
d.b. as map, ~~xx~~

Thomas St:(now part of Aberdow St.) 2 st. houses; d.b.  
as map, but omit on N. side for warehouse etc.

Jane Place:(just to the S.E. of John St. off the Old Kent  
Road) has gone; site clear; omit colour (d.b.). N.E. up

Page's Walk: the purple remains, as map, save for two ~~em~~  
omissions for business premises, E. of Willow Walk (S.E.  
side), and the small patch in the middle of the N. side  
W. of Willow Walk. The houses are 2 and 3 st., and include  
Clyde Buildings (N. side. E. of Willow Walk). On N. side  
on site of ~~xxxxxxxx~~ demolished houses and a large unoccup-  
ied area are four fine Guinness Blocks, very much like t  
those in Snows' Fields. (1894.5). Colour purple.

Wright's Buildings: (S. of Grange Road, just N. of Page's  
Walk); 2 st. houses; 2 extra houses (see plan) now shown  
on map. All d.b. as map. Stench, ~~xxxxx~~ apparently from  
drains, very bad here, and noticeable because even in  
the worst slums so rarely detected.



On the 12th. we did some of the courts that had been  
omitted in Berrandsey New Road, (see earlier) and on the  
13th. continued S.E. to

Grimscott St: 2 st. houses and 2 st. plus attics; pink, as  
map. On W. side is



*Willow Street - pk*

*Kintore Street - pk & lb*

(5)

135

Fawcett Court: 2 st. houses; 2 rooms each; rents 5/- and 5/6; a particularly clean little spot; flowers, and one deer with as bright a brass knocker as one could see any where; l.b. as map.

Willow Walk: 2 st. houses; very decent; pink, as map.

Willow St: 2 st. houses; 6 rooms and yard etc.; rents used to be 10/- recently raised to 12/-; 2 families in practically all houses; got my information in one that proved to be occupied by a policeman; rooms rather untidy, like the wife; the man appeared, big, half-dressed, heavy with sleep (he had been on night duty), and showed me his boxes of flowers and creepers in the back yard, all very tidy and clean and going to be bright. Complaints of the rent. The street pink, rather than the purple of map.

Willow Grove: 2 st. houses; paved way; school on N.E. side; purple, as map. Into Grange Road, and N.W. to

Woodlands Place: 2 st. houses; S. side only (omit colour N. side); poor; some broken windows etc. most doors shut; generally two rooms to a family; rents for some (5 roomed) 10/6; others, four rooms, "less". Some d.b. but leave l.b. as map. Back to

Kintore St: N. side, E. end, Thomas' Place: little cottages; l.b. as map here. The rest 2 st. houses, like Willow St. "Pearl Life Agent" plate at one of them; colour xxx rather pink than the l.b. of map.



Ascot Road - pk L

✓  
pink

Marcia Road - pk L

Hendre Street - N side - pk L

(6)

137

Fort St: very much like Willow St. N.W. of Ascot Road; then 2 st. plus attics and 3 st. All pink as map, the only doubtful part being the 3 st. houses ~~xxxxxxx~~ near the S.E. corner.

Ascot Road: mainly 2 st. houses; 1859; 6 roomed; saw two little maids-of-all-work, and the butcher and green-grocer calling; an occupant told me her rent, £28 a year, and rates and taxes; she said that very few of the houses were sub-let; leave pink-barred, as map.

Upper Grange Road: N. side; pink-barred, as map.

Marcia Road: between the railway and the Old Kent Road; 3 st. houses; 6 roomed; let by floors and arranged for this; 2 rooms said to let at 6/6. (My informant a woman living here). Two or three broken and untidy windows, but curtains and much decoration the rule; a good many railway employees, carmen etc. etc. living here; query purple to pink.

Hendre St: (leading to the S.E.R. Goods Station) 2 st. ~~is~~ houses; these on N. side semi-detached, and rather brighter looking than those on the S. Query purple to pink here. S. side purple as map. Round the corner are

Hendre Cottages: 2 st. houses; tiny; real gardens, also tiny; l.b. as map, but another small row (see plan) not shown.



f. additional row.



*Dover Buildings - pk*

Dover Buildings (N.W. of the Cottages): 6 storeyed; let in sets of from 2 to 5 rooms at rents from 6/- to 11/6; owned by the Improved Industrial Dwellings Co. Full; good; purple to pink. A little further N.W. are more blocks of the same Co. colored pink in the map, the red square in their Old Kent Road frontage indicating a public house, with the sign of "The World Upside Down". -

Old Kent Road remains, with the exceptions for the Buildings, red as map, omitting colour for the clearance at the S. corner of John St.

Economically, the big Goods Stations of the S.E. and L.B. and S.C. Railways stand first here; structurally, the chief changes are the new blocks in Webb St. and the new Guinness Blocks in Page's Walk. Both changes have greatly increased accommodation, building having been almost entirely on vacant sites. Most of the dark blue coloring at the N.W. end of the area thus remains. The part lying to the S. of Page's Walk has tended to improve, pink being even more the prevailing colour than the map suggests.



Notes on District 32.

141

Housing: Many densely populated courts, but on the whole an area in which overcrowding is excessive in courts, houses and groups of houses, rather than in the district at large. Density of population, if measured by acre not very great, owing to large amount of unoccupied space, and to the small number of block dwellings. The biggest of these are the two new Guinness buildings, and these at the moment look spick and span. But if they, or others of the same kind, multiply to any extent the area can hardly gain. The conditions of Whitechapel reproduced in the Borough and Bermondsey would be horrible. The older Hanover Buildings in Teeley St. are big and good, and the smaller block in Bath St. is also good. But others of the older blocks are generally smaller, and nearly always inferior. One of the very worst is that in Barnham St. On the whole however, the district remains up to the present a small house area, the vast majority of streets being composed of two and three storied houses, with the former by far the more numerous.

The demand for houses is keen, and it is a very rare thing to see an empty house. The empty sets in Barnham St. Buildings are an exception, and in the Kipling St. block it will be remembered that the caretaker had a waiting list. The Guinness Blocks in Snews Fields were full, and I believe also those in Page's Walk. In the Old Kent



(2)

Read and in Webb St. it was the same.

The demand appears to be sending rents up, but not to an extravagant extent. Watts told me of his own experience when, wishing to take a certain house, he had been prevented by another applicant who had voluntarily offered a higher rental in order to secure it.

About half the area was already built over in the early years of the century. Occasionally one comes across a street, ~~the~~ houses in which were built for the first time within the last twenty-five years, but as a rule houses newer than that have replaced older ones, and the older ones are still commonly found.

Crime: Watts said that there were very many ticket-of-leave men employed in the wharves, but the district is very far from being the notorious resort of criminal offenders. Van larceny is a common offence in and around the wharves, and petty larceny is a charge often brought against the occupants of many of the courts. But serious crime is apparently rarely hatched or committed in the district. Drink is the besetting weakness, and drunkenness, disorderliness, brawling, and the violent outbreaks of these under the influence of drink would appear to be the most common offences. This is probably true of most other parts of London, but it appears ~~is~~ that Bermondsey



the Borough, and parts of Rotherhithe are hard drinkers above the average. When a respectable couple who had lived in Truscott Court for 33 years were complaining of its deterioration, and saying that it was just the gate of hell now on a Saturday night, the adjourning Surrey Buildings being now a comparative abode of peace, Watts discounted the black description given. He said that of course there was a good deal of drinking and fighting, but "fighting and rows have to be accepted" in some parts of the Borough, in Bermondsey, and in parts of Rotherhithe as a frequent occurrence. But drunken though the n'h hood is, it "used to be much worse". In many parts one certainly seems to feel the drink, perhaps because the signs of excess are so clearly visible in the faces of the people. On Mondays the numbers of women frequenting the public houses was noticeable, and I certainly saw more people, mainly men, under the influence of drink that I have ever noticed in other parts of London. A certain ~~gross~~ gross virility appears to prevail, the men big-boned and muscular; the women often matching them well, every one perfectly civil if spoken to, but in appearance, in manner and in the over-heard remarks <sup>often</sup> coarse and debased. It is perhaps as unwise and as unjust to indict a district as a nation, but this impression of a large and gross masculinity is the prevailing one. ~~There~~ Exceptions were often



met, but in many of the courts the hair of the children, with occasionally a child's face, was ~~the~~ all that there was of light in the prevailing gloom.

The standard of life is thus often very low, but professional immorality appears to be the exception. One of the reasons given by Hays in applying to the L.C.C. for permission to lock their gates at night was the use of the place by low class women, and there is, doubtless, a good deal of promiscuity. But brethels appear to be quite the exception. Watts even said that so far as he knew there were none in the Bermondsey Sub-Division: "Nothing of that kind" he said; "Nothing like Stamford St. and Fitzroy Square here". It is the old story probably: the district taken as a whole, is either too poor or too decent-lived, for this form of immorality.

Drink: Although there is so much drinking to excess, and although the number of licensed houses is large, ~~but~~ Watts insisted several times that the trade done was for the most part that of a legitimate kind, demanded by the neighbourhood. In the back streets very often, and in the more important thoroughfares, occasionally, houses are found to close before the legal time.

Employment at the Wharves: Watts asserted that the number of men taken on regularly since the Strike had considerably diminished. He assured me that what has happened



is exactly the opposite to that with which one is familiar in connexion with the Docks at the N. side of the River. He described the crowds who wait at the gates in the morning on the chance of being taken on, and the numbers who fail, Watts appeared to be very confident as to the worsening of conditions as regards permanency of employment, and although it is a point which requires further verification, Watts is a man who knows what he is talking about, and his recollection of the district takes him back to a year before 1889.

Prices: (noted in the Bermondsey St. Market, on the morning of June 9 (Friday))

Scraps of meat, on the butchers' trays in front of their shops, started from a minimum of a penny a pound. On Sunday morning Watts said that good beef could be bought at 2<sup>3</sup>/<sub>4</sub>d. a pound.

Bread, fourpence the quarter.

Cod (stall) 2d. a pound.

Kippers (stall and shop) a penny a pair.

Bacon (shop) from 3d. a pound.

Margarine (shop) from 4d. a pound.

A woman at a stall of second hand clothes was offering



things to a group of sluggish buyers, a coat at a shilling<sup>s</sup> and a pair of stockings at two pence, eliciting no response. I only lingered a moment, but perhaps it was as well, as Watts said that <sup>when</sup> a mere man attracts their attention they resort to the <sup>a</sup>pleasantry of asking him for effects for some embarrassing article of female apparel, and turning the laugh of the group against him.

XXXX

Two points were mentioned by Sommersgill that may be noted here (1) the payment of tram and 'bus fares by policemen. Payment is enforced now, both the conductors having had instructions from their managers, and the Chief Commissioner having set <sup>some</sup> ~~the~~ plain clothes men as inspectors. It is the duty of the latter, if they see a constable riding, to board the tram or bus and see his ticket. (2) the bad walk of many members of the Force; A young constable that we met who was walking in a very lame way attracted Sommersgill's attention; he said that there were many like him, and laid the blame on the regulation boots.















